

Do you deserve to be Rich? For just £5 per month you can receive over £19,500.

INTERESTED? Complete slip and return to . . .

BARRY MEISEL UNIT TRUST,
PARKSIDE INSURANCE AGENCY,
32 PARKSIDE AVE., BICKLEY, KENT.
Phone 01-464-2963.

Name

Address

Age.....

Table Tennis News

Official Journal of the English Table Tennis Association

Edited by George Yates

No. 36

JANUARY 1971

Price 1/6

English Closed Championships

THE NEW MONARCHS



Photo by PETER MADGE

This month's Star Feature

SCANDINAVIAN OPEN CHAMPIONSHIPS

as collated by The Editor

TABLE TENNIS NEWS

Published on the 10th of each month, October to May inclusive, Postal subscriptions 15/- for eight issues post free.

Advertisements: Derek R. Tremayne, General Secretary, E.T.T.A., 26-29 Park Crescent, London. W1N 4HA. Phone: 01-580 6312.

Circulation: David R. Wolstencroft, 11, Aireworth Street, Wingates, Westhoughton, Lancs. Phone: Westhoughton 2021.

Editorial: George R. Yates, 43, Knowsley Road, Smithills, Bolton, Lancs. Phone: Bolton 42223.

FACE OF REALITY

The impending engagement of Hans Alser as national coach to the Deutscher Tisch-Tennis Bund is most certainly a feather in the cap of the Federal German Association.

Furthermore, and quite apart from the financial consideration, it is the right sort of challenge that would appeal to the 28-year-old Swede and more is the pity that a player of Alser's calibre could not be tempted across the North Sea instead of the Baltic.

Time was, not so very long ago, that the English Table Tennis Association gave serious consideration to the possibility of engaging an Asian coach but, unlike the German Association, we simply could not afford to do so.

And it will be ever thus unless a more realistic sum is made available, from an already overstrained exchequer, for such enterprises.

Gone should be the days of bickering over a sixpenny increase in affiliation fees and away too should be swept the cobwebs of parochialism that for so long have hampered the forward looking policies of the so termed hierarchy who, in essence, are just the same kind of people as anyone else.

Government grants are all very well, and most gratefully acceptable, but the saying still holds good that the Lord helps them that help themselves. And to this end the membership at large should contribute more liberally to a cause we all have at heart.

ENGLISH TABLE TENNIS ASSOCIATION

- Patron: Her Majesty the Queen
- President: A. K. Vint, O.B.E.
- Chairman: C. M. Wyles.
- Deputy Chairman: G. R. Yates.
- Hon. Treasurer: T. Blunn.
- Management Committee: I. R. Crickmer, M. Goldstein, L. Hoffman and K. Watts.

On the International Front

by **GEORGE R. YATES**

ENGLAND LOSE IN LENINGRAD

After opening up with a 1-0 lead over Russia in the Premier Division of the EUROPEAN LEAGUE, in Leningrad's 1,500-seater Army Sports Club hall which, on December 22 was packed to capacity, England eventually went down 3-4 for their third consecutive defeat.

It was a bright enough beginning and much applause was earned by Chester Barnes when beating the Soviet champion Anatoly Amelin but, in the final encounter of the night, against Stanislav Gomozkov, Barnes was unable to hold on after winning the first game.

As always it was the Soviet's European women's champion, Zoya Rudnova, who proved the biggest stumbling block for not only did she enjoy a comfortable win over Karenza Mathews but teamed up with Gomozkov for an equally convincing win over the Middlesex international partnered by Barnes.



Still 'Queen of all the Russias' is Zoya Rudnova, a comfortable winner over Karenza Mathews.

Promotees Austria crashed to their third successive 0-7 reverse when beaten by the all-conquering Hungarians and, in Karlsbad, Czechoslovakia, beat Federal Germany 4-3, Ebby Schöler losing the opening set to Jaroslav Kunz.

Results:—

- U.S.S.R. 4 ENGLAND 3
- A. Amelin lost to C. Barnes 19, -19, -14.
- S. Gomozkov bt D. Neale 15, -23, 17.
- Z. Rudnova bt K. Mathews 17, 11.
- Amelin/Gomozkov lost to Barnes/Neale -17, 21, -14.
- Gomozkov/Rudnova bt Barnes/Mathews 13, 11.
- Amelin lost to Neale -20, 14, -19.
- Gomozkov bt Barnes -17, 19, 14.

AUSTRIA 0 HUNGARY 7

- H. Schluter lost to I. Jonyer -21, -21.
- R. Weinmann lost to T. Klampar 17, -10, -10.
- G. Smekal lost to B. Kishazi -10, -16.
- Schluter/Weinmann lost to Jonyer/Klampar 19, -19, -9.
- Schluter/Smekal lost to Jonyer/J. Magos 16, -12, -17.
- Weinmann lost to Jonyer -20, -16.
- Schluter lost to Klampar -12, -14.

FEDERAL GERMANY 3 CZECHOSLOVAKIA 4

- E. Schöler lost to J. Kunz 0-2.

- B. Jansen lost to M. Orlowski 0-2.
- D. Schöler bt I. Vostova 2-0.
- Jansen/M. Ness lost to Orlowski/J. Turai 1-2.
- Schöler/Schöler bt Turai/Vostova 2-0
- Jansen lost to Kunz 0-2.
- Schöler bt Orlowski 2-0.

Current positions:—

	P	W	L	F	A	Pts
Hungary	3	3	0	20	1	3
Sweden	2	2	0	11	3	2
Czechoslovakia	3	2	1	11	10	2
U.S.S.R.	3	2	1	11	10	2
ENGLAND	4	1	3	13	15	1
Fed. Germany	2	0	2	4	10	0
Austria	3	0	3	0	21	0

Following up their initial win over Denmark in DIVISION 2, France have taken a clear lead after away victories over Greece and Switzerland. Shock win, however, was accomplished by Ireland who, in Dublin on Dec. 3, beat Denmark 4-3. Results:—

- Greece 2 France 5
- Ireland 4 Denmark 3
- Netherlands 3 Belgium 4
- Switzerland 1 France 6

Positions:—

	P	W	L	F	A	Pts
France	3	3	0	17	4	3
Belgium	3	2	1	13	8	2
IRELAND	3	2	1	10	11	2
Netherlands	3	1	2	10	11	1
Denmark	3	1	2	8	13	1
Greece	3	1	2	8	13	1
Switzerland	2	0	2	4	10	0

JAPAN TOUR

From England, Japan's touring team made the rounds of Federal Germany and split their forces to engage in separate matches for men and women.



WILFRIED LIECK

Some ten matches were played in all, five by Shigeo Itoh, Tokio Tasaka and Yujiro Imano, and five by Toshiko Kowada and Yuki Ohzeki and in all encounters the Germans played second fiddle. Ebby Schöler played in four matches but in 8 sets could only return one win, against Imano in the final match!

Most successful of the Germans was Bernt Jansen with 3 wins in 7 sets. Wilfried Lieck won twice in 6 sets but Klaus Schmittinger and Martin Ness had nought to show for their labours.

On the distaff side, Japan won every match, except one, 3-0, Diane Schöler saving the complete 'whitewash' when victorious over Ohzeki in Berlin.



BERNT JANSEN

MEN

FED. GERMANY 1 JAPAN 5 (Frankfurt)

- Imano bt Schöler 17, 11; lost to Jansen -17, -18.
- Itoh bt Schmittinger 20, -12, 8; bt Schöler 6, 14.
- Tasaka bt Jansen 19, 19; bt Schmittinger 15, 18.

FED. GERMANY 2 JAPAN 5 (Berlin)

- Imano bt Schöler 13, -15, 19; lost to Jansen -14, -10.
- Tasaka lost to Jansen 15, -16, -14; bt Lieck 20, 18.
- Itoh bt Lieck 16, 13; bt Schöler 12, 18; bt Jansen 14, 17.

FED. GERMANY 1 JAPAN 5 (Kleve)

- Imano lost to Lieck 18, -19, -10; bt Ness 16, 16.
- Itoh bt Ness 21, -18, 15; bt Schöler 18, 15.
- Tasaka bt Schöler 21, 15; bt Lieck 17, 20.

FED. GERMANY 0 JAPAN 5 (Dillingen)

- Imano bt Ness 10, 20; bt Jansen -17, 15, 13.
- Tasaka bt Schmittinger 12, 21; bt Ness 16, 18.
- Itoh bt Jansen 13, -13, 13.

FED. GERMANY 2 JAPAN 4 (Kondringen)

- Tasaka lost to Lieck -17, -15; bt Schmittinger 17, 19.
- Itoh bt Schmittinger 15, 15; bt Schöler 10, 16.
- Imano lost to Schöler -11, -13; bt Lieck 9, -18, 20.

WOMEN

FED. GERMANY 0 JAPAN 3 (Frankfurt)

- Kowada bt Scharmacher 10, 11.
- Ohzeki bt Schöler -17, 14, 17.
- Kowada/Ohzeki bt Scharmacher/Schöler 14, -19, 18.

FED. GERMANY 1 JAPAN 3 (Berlin)

- Kowada bt Wetzel (nee Buchholz) 20, 14; bt Schöler 8, 6.
- Ohzeki lost to Schöler -14, -14.
- Kowada/Ohzeki bt Schöler/Wetzel 17, -19, 12.

FED. GERMANY 0 JAPAN 3 (Kleve)

- Kowada bt Simon 20, 10;
- Ohzeki bt Hendriksen 10, 12.
- Kowada/Ohzeki bt Simon/Hendriksen 18, 17.

FED. GERMANY 0 JAPAN 3 (Dillingen)

- Ohzeki bt Scharmacher 19, 16;
- Kowada bt Wetzel 12, 16.
- Kowada/Ohzeki bt Scharmacher/Wetzel 9, 12.



Dressed for the weather in Leningrad are Stanislav Gomozkov (left) and Anatoly Amelin.

FED. GERMANY o JAPAN 3
(Kondringen)

Ohzcki bt Simon -14, 16, 19;
Kowada bt Schöler 9, 16.
Kowada/Ohzcki bt Simon/Scholer
18, -17, 17.

JAPANESE IN SWEDEN

Coincident with the European tour, another Japanese quintet engaged Sweden in Falkenberg on Oct. 31. Spearheaded by Nobuhiko Hasegawa, the Japanese men won 5-2 and their women 3-2. Results:—
MEN

Abe lost to Bengtsson -12, -7; lost to Johansson -12, 13, -15;
bt Persson -20, 20, 20.
Hasegawa lost to Persson -16, -17;
bt Bengtsson 20, 17;
bt Johansson -11, 16, 15.
Inoue bt Johansson 16, 17;
bt Persson 5, 16; lost to Bengtsson -11, 22, -19.

WOMEN

Abe lost to Andersson -14, 11, -14;
bt Hellman 15, 17.
Hamada bt Hellman 8, 15;
lost to Andersson 15, -12, -16.
Abe/Obonuma bt Andersson/Hellman
-19, 10, 19.

IN YUGOSLAVIA

A combined Japanese team, in Zagreb, beat a European team 5-2 with the following results:—
Imano lost to Alser -12, -15;
bt Johansson 18, 19.
Hasegawa lost to Johansson -16, 15, -20;
bt Alser 19, -17, 19; bt Korpa 17, 18.

Itoh bt Korpa 16, 15;
bt Alser 14, -15, 12.
At Subotica, on Nov. 9, Sweden beat Yugoslavia 5-2. Results:—
Alser bt Surbek -15, 13, 16;
bt Stipancic 17, 14.
Johansson bt Stipancic -15, 16, 19;
lost to Karakasevic -10, -10.
Bengtsson bt Karakasevic 10, -11, 20;
lost to Surbek -15, -19;
bt Stipancic 19, -19, 18.

SCOTTISH CLOSED

Holder Malcolm Sugden lost to Richard Yule in the semi-finals of the men's singles in the Scottish Closed Championships. Yule went on to beat Eric Sutherland in the final.

Scottish rankings:

MEN:
1. M. Sugden; 2. E. Sutherland;
3. R. Yule; 4. B. Kean; 5. R. Kerr;
6. P. Forker; 7. J. Hawkins;
and 8. P. Cameron.

WOMEN:

1. L. Barrie; 2. E. Smith;
3. K. Angus; 4. H. Hamilton;
5. O. Hawkins; 6. L. Montague;
7. C. McBeath; and 8. P. Fleming.

BOYS:

1. K. McNee (Ches.); 2. A. McCulloch; 3. R. Thomson;
4. S. Thorpe; 5. M. Thomson;
6. K. Reid (Luton); 7. A. Taylor;
and 8. J. Lamb.

GIRLS:

1. E. Smith; 2. L. Montague;
3. P. Fleming.

Irish Corner

BY KEVIN DRUM

DANES CONQUERED

Ireland put up a great performance when they fought back from being 0-2 down to beat Denmark 4-3 in Division 2 of the European League.

Victors by 6-1 in the corresponding match last season, the Danes started off as though they were going in for a repeat performance: when Tommy Caffrey and Jimmy Langan lost their opening singles to Klaus Pedersen and Neils Poulsen respectively. But Joan Warren halted the slide by beating Elin Lyderik in straight games.

Then Caffrey and Langan combined brilliantly to win the men's doubles and level the match score, but Pedersen and Mrs. Lyderik took Denmark into a 3-2 lead when beating Langan and Kyra Stewart in the mixed.

After a tremendous struggle Caffrey overcame Poulsen to level matters once again and the atmosphere was electric when Langan and Pedersen entered the court for the decisive final singles encounter.

In a see-saw struggle which had the crowd on its feet, Langan won the first game 18, lost the second by a similar margin, but in the decider outmanoeuvred the tired but sporting Dane to clinch the match.

Two days later, however, Pedersen had his revenge when the pair clashed in the men's singles final of the Connacht Open. Langan reversed his European League result against Poulsen in the semis and Pedersen had an easy win over Irish No. 3 Cliff Thompson. In the final Pedersen beat Langan 13 and 18. The women's singles title went to Elin Lyderik who beat Miss Stewart in a hard fought contest -12, 20, 19.

Pedersen and Poulsen won the men's doubles, Mrs. Lyderik and Northern Ireland's Bernadette McGrorty won the women's, and Langan and Miss Stewart the mixed.

HAMPSHIRE NOTES

by David Cosway

HANTS 'CLOSED'

HELD for the first time for several years in Portsmouth, at the Wimbledon Park indoor sports centre, the 'Closed' attracted the largest entry for many years with 81 in the men's singles and 25 in the women's. A very well run tournament was efficiently handled by Eddie Gray and Peter Goldring with their fellow committee members of the Portsmouth Association.

The men's singles confirmed Chris Pickard as the leading player in the county when he went through an entry including all the top ranked players. The event did not, however, solve the problems of ranking the mass of similar standard players below him and, in fact, added to their worries. Main surprise was the achievement of David Phelps of Aldershot in reaching the final purely on merit with some very good wins over ranked players including Chris Shetler in the semis. He lost 2-straight however to Pickard in the final. Chris had reached this stage with a semi-final victory over his brother Brian.

In the women's singles, after many seasons in the backwoods, Daphne Gray won the title for the first time. She has played in several finals but has never previously beaten her final opponent, Sheila Foster, in a major event. She is to be congratulated on the consistency of her play from the pre-'Twins' days to this season when she has regained her place in the County first team.

The Intermediate singles (under-23) produced the best final when Chris Pickard just edged out Terry Bruce at deuce in the third.

Finalists in the boys' singles were predictable in that the top two ranked players reached the final with Phil Crane beating Colin Sargeant. Similarly Lesley King confirmed her

No. 1 ranking by beating Beverley Davis, ranked No. 2, in the girls' event.

The doubles event produced some good table tennis with Stuart Tannahill and Keith Summerfield the surprise winners of the men's, beating Ray Lush and Bill Moulding in the final. Predictably, Sheila Foster and Daphne Gray proved too experienced for Julie Daniels and Julie Hudson in the women's final.

Ray Lush and Daphne Gray beat Bill Moulding and Julie Hudson in the mixed and, in the veterans final, C. Bush beat J. Prince.

ACTION SHOT!

Submit your entries for the 1970/71 action shot photographic Competition. Action photographs may be of any ranked English players, Senior or Junior, or leading Foreign Players.

First Prize £10/0/0
Second Prize ... £5/0/0
Third Prize £2/10/0

Entries will be judged by a panel to be nominated by the Editor. Photographs by amateur photographers only will be accepted.

Minimum print size 5in. x 4in.
No colour slides acceptable.

Prints will be returned proving that reply paid postage and packing is enclosed.

Winning entries will be a star feature in the April edition of Table Tennis News.

Entries to:—
English Table Tennis Assoc.,
26/29 Park Crescent,
London W1N 4HA

Marked: ACTION SHOT!
Closing date—Saturday, March 6, 1971.

COVER PICTURE

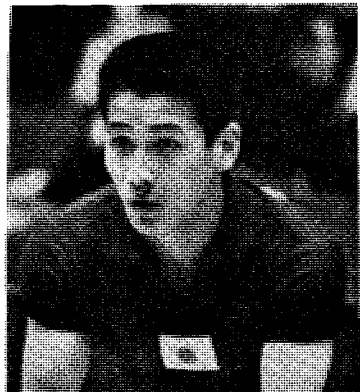
Chester Barnes and Karenza Mathews who, at Canterbury on Jan. 2, took over the triple titles, previously held by Denis Neale and Mary Wright, in the Twelfth English Closed Championships.

Results:

M.S.: C. Barnes (Essex) bt A. Clayton (Yorks.) 7, 17, 15.
W.S.: K. Mathews (Middx.) bt J. Shirley (Bucks.) 16, -23, 13, 17.
M.D.: Barnes/T. Taylor (Essex) bt A. Hydes/D. Neale (Yorks.) -16, 18, 18, 18.
W.D.: Mathews/Shirley bt L. Bashford (Yorks.)/P. Piddock (Kent) -16, 13, 20, -18, 11.
X.D.: Barnes/Mathews bt Hydes/Piddock -19, 18, 8, -15, 15.

In the men's singles, Yorkshire's Tony Clayton ousted the reigning title holder Neale in the third round and went on to beat 'Les' Haslam (Middx.) in the quarters and David Brown (Essex) in the semis.

Laurie Landry's report on the championships will appear in next month's issue.



NOBUHIKO HASEGAWA

Letters to the Editor

TOURNAMENT GROUSE

Doubtless you have received other letters complaining about certain facets of the organisation at the Middlesex Open. One could point out that the hall was too hot, that the lighting (apart from the finals) was inadequate, especially considering that this was a 3-star tournament (but then so was the Merseyside).

And that because the P.A. system did not extend to the cafe, it was a gamble to go for a drink, since people were being scratched almost immediately if they did not respond to a call.

But much the worst fault was the treatment of players who had forgotten their playing schedules, with regard to finals tickets.

I know that it said on the schedules that they would be needed to get tickets, but at any tournament, a certain percentage of players arrive without their confirmations, etc., and this must be anticipated.

But to tell players who have paid over £1 to enter, plus travel, and who could possibly have been in the finals (e.g. Clayton, Gunnion, Robertson) that they must pay 5/- to come into the finals is quite ridiculous. Are not tournaments primarily run for the players' benefit? Things like this make one wonder!

Geoff Coxon.

22, Maple Road,
Anerley,
London, S.E. 20.

(No other letters have been received on this subject—Ed.).

SAMIR CORRECTED

The Article by Samir Chatterjee 'Tears, Idle Tears' (Table Tennis News, December) was very interesting but not strictly accurate. 1956 was 'Worlds' Year in Tokyo and the quarter-finalists comprised five Japanese, the three others being Krishna Nagraj, Richard Miles and Richard Bergmann.

Ogimura, Tomita, Nohira, Tanaka, all of Japan, beat respectively Miles, Bergmann, Nagraj and Kawai (Japan). Johnny Leach was the 2nd seed to go, losing to the Indian, Nagraj—in the quarters he lost the fourth game—14 and only 20-22 in the decider.

Those were the days of pure sponge and Richard Bergmann in the second round of the singles played Tsui Cheung Ling of Hong Kong whose bat had leather one side, crepe on the other.

Bergmann objected to the ball and inspected many others before carrying on. In his quarter-final with Tomita, after two rounds on the same day, he 'walked' the table for when leading 19-17 he had an easy smash. But in trying to make his opponent look small with a dropshot, he missed it and did a war-dance on top.

The great Richard wrote an article in the Magazine, worth recalling 14 years later, especially now he is gone. Prepare like Boxers, is the Penholder superior to the orthodox grip? The answer is No!

The reason for the Japanese triumphs is a simple one. They are top of the

tree because of their fitness, youth, stamina, fleetness of foot, agility and fine powers of concentration. And because of the tremendous fighting spirit which helps them to win matches in spite of the handicaps that come from the penholder grip.

Anyone who believes that the Orientals owe their successes to sponge, knows nothing about the game and even less about the Japanese Aces.

In his last English Open in 1957, Bergmann giving away many years, beat the reigning World champion, Tanaka, in the quarter-finals — a remarkable victory even by his standards. He will never be forgotten.

Aubrey Hill.

31 Byron Avenue,
Coulson, Surrey.

OFFICIAL BADGES

I wonder how many of the people concerned would agree with me that the National Council should have a re-think on the new-style blazer badge for County Umpires? Possibly also on the other official badges. I have always thought that any new design would be an improvement on the old badge—but how wrong can anyone be?

In my opinion the new badge is uninspiring and uninformative, and can certainly only be recognised for what it represents by those "in the know". What pride can there be in wearing such an insipid emblem?

So how about agreeing to a modification, National Council—and calling-in those already given out for a free re-fit? Let's at least portray the meaning and significance of the badges, by adding in not-too-large lettering the initials "E.T.T.A." and a designation of the wearer's qualification. The badge might then be worth its asking-price of ten bob!

K. J. Turner,
Hon. County
Umpires' Sec.
Norfolk County TTA.

'Fantasia'
11 Mill Close, Hethersett,
Norwich, Nor 42X.

"ROOT OF ALL EVIL"

Will the money now being paid out as prizes make or break the open tournaments? I am of the opinion that unless a change of distribution is effected it will kill them for the "rabbits" will rebel from the ritual slaughter.

Money is the all-powerful attraction I will admit, but why not spread the available cash more liberally instead of the one big amount for the winner.

Why not have incentives for those qualifiers for winning subsequent rounds in the main draw as in the Coca-Cola National Trophy Competition and give the "rabbits" the necessary encouragement to preserve their interest rather than crush it.

Furthermore, whilst one must encourage people to become umpires, I am not at all sure that we are on the right lines by the employment of cash enticements small though these may be.

Without any qualifications whatsoever, volunteers can be motivated into officiating purely to qualify for a free meal.

Why not give preference to those people who have taken the trouble to qualify and reward them more adequately.

Moreover, is a player in the correct frame of mind to umpire having just lost? Here again not all players are fully conversant with the Rules.

At one recent Open a particular game lasted far longer than it should because the player taking the set knew nothing about the Expedite Rule, indeed he had never heard of it!

George Reid.

141 Argyll Avenue,
Luton, Beds.

ANOTHER VIEW

I cannot see much point in the letter from Bert Mayern (published in the last issue) for the photograph in question was, to my way of thinking, a very good action shot.

As far as the Service Law is concerned, the ball has left the hand, and Itoh is then free to do as he likes from a position he starts nearly all his services.

I have witnessed this player many times, both in Munich and in this country and the ball goes upwards within the specified limits.

The photograph was not taken from the Umpire's position. He would have a completely different view.

Cliff Darley, N.U.

13 The Booths,
Pontefract, Yorks.

LETTER FROM JAPAN

LETTER OF APPRECIATION TO E.T.T.A.

We hereby express our sincere gratitude for your various troubles taken at the time of our Japanese table tennis team's visiting your nation the other day. A report made by the said expedition team at the J.T.T.A. Directors Meeting has all heartily impressed Mr. Goto, President, and other staff personnel.

The said expedition team was favoured with an opportunity to actually go through experiences for full realization that the European table tennis world has made great strides in table tennis techniques in the recent times. It must, therefore, have been a really fruitful expedition in view of the 31st World Championships drawing at hand.

As for the mentioned World Championships, 37 nations have forwarded their preliminary applications by now, while more than 40 nations are expected to enlist by the closing date for formal applications, namely 5th February, 1971.

We, the Organizing Committee for the 31st World Table Tennis Championships, are making our utmost for perfect preparation thereof and looking forward to see you in Nagoya in the next spring.

The foregoing has been written in haste to express our hearty appreciation for your particular consideration and kindness.

Yours faithfully,
JAPAN TABLE TENNIS
ASSOCIATION
Ikuji Yotoe
Executive Director.

COMPLAINT NOTED BY B.B.C.

Writing to the Executive Producer, "Grandstand", British Broadcasting Corporation on Nov. 1, 1970, Mr. G. W. Barnes, Hon. Sec. of the Halifax and District T.T.A. made the following complaint:—

"I am writing on behalf of the Halifax and District Table Tennis Association with regards to your recent Television programme "England v. Japan" at Birmingham screened on "Grandstand" on Saturday, Oct. 24.

"This was scheduled to be shown at 1-10 to 1-20, 1-40 to 1-50 and 2-10 till 2-20, making a total of thirty minutes, this was eventually "cut" by 50% to fifteen minutes.

"There are approximately 150,000 table tennis players in England, and as Japan are the World champions and have been for the last five years, I am quite sure that a large number of table tennis fans were disappointed at not being able to see the Japanese for the full time as advertised in the Radio Times.

"Table Tennis always suffers in getting the "chop" to favour other sports which seem to get full T.V. coverage.

"Enclosed are the signatures of Officials, Club Secretaries and registered players in the Halifax and District T.T.A. who all support these views."

Clara de Groot, of the B.B.C.'s Programme Correspondence Section replied to Mr. Barnes as follows:—

"Thank you for your letter about our television programme 'Grandstand' . . .

"We note and appreciate the views you express with regard to the timings but we have a wide range of interests to cater for in "Grandstand" on Saturdays and we try to cover the highlights of all the events scheduled for the afternoon, as well as many extra items which may have to be included.

"As most of them are outside broadcasts, the times of which are beyond the control of the B.B.C., it is not always possible to keep strictly to an advertised schedule and the RADIO TIMES billing indicates that the arrangements might have to be changed.

"During the run of the transmission the producer is constantly in touch with the Outside Broadcasting Units, but it only needs a photo-finish at a horse race, a delayed start on some other event, or undue extra time at a Rugby match to disrupt the schedule completely, and snap decisions sometimes have to be made which must inevitably lead to changes in the advertised arrangements which cannot be announced beforehand.

"I can assure you that changes of this kind are made only after the most careful consideration of all the factors involved, and the producers concerned do not switch from one event to another unless they are convinced that the other has an equally substantial interest for our television audience, but if it is a question of adhering rigidly to timings or safeguarding the subject matter, then the latter alternative takes priority."

Coca-Cola National Team Trophy Competitions

by Derek R. Tremayne
General Secretary E.T.T.A.

This season, cash prizes will be awarded to leagues from the fourth round onwards (third for Bromfield) the Prize Structure being as follows:—

SENIORS (Wilmott Cup and J. M. Rose Bowl)

Final—		
Winners (2)	£30
Runners-up (2)	£15

Semi-finals—		
Winners (4)	£15
Runners-up (4)	£8
Quarter-finals—		
Winners (8)	£10
Fourth Round—		
Winners (16)	£5

The total prize money in these senior competitions totals £342 and total winnings (per team) will afford the winners £60 and the runners-up £45.

JUNIORS (Carter Cup and Bromfield Trophy)

Final—		
Winners (2)	£20
Runners-up (2)	£10
Semi-finals—		
Winners (4)	£12
Quarter-finals—		
Winners (8)	£6

Fourth Round—		
Winners (16)	£3
(Third for Bromfield)		

Total prize money in the junior category totals £204 with a winning team collecting £41 and runners-up £31.

PRESS OFFICER COMPETITION

The Coca-Cola Bottlers Limited have agreed in connection with the foregoing competitions, to hold a competition for League Press Officers and and if you wish to participate, all that is required is that you should send me copies of all your press reports, giving details of the particular competition and the involvement of the sponsors.

At the end of the season, Coca-Cola will give a bottle of Barcardi each to

the six best entrants together with a supply of their own product.

Entries will be judged by Sydney Hulls of the DAILY EXPRESS, Barry Ricketts of the Coca-Cola Export Corporation P.R. Dept., and myself.

SUSSEX NOTES

by John Woodford

CANNONS TO THE LEFT, CANNONS TO THE RIGHT

THE presence of the Chelsea College of Physical Education at Eastbourne with its 600 sporting young ladies is proving a bigger asset than ever in Sussex sporting circles, especially table tennis. Lowestoft's Rose Bowl finalist Linda Woodcock has now completed a full term at the College and still more and more victims are falling under the spell of her (table tennis) skills.

In the Eastbourne league alone she has accounted for five players (all men) who can be counted as some of the most difficult to beat in East Sussex—just to mention three—John Dobell and Dan Penfold (Eastbourne) and Derek Mammone (Hastings). In the women's field she has yet to meet the Sussex No. 2 Suzanne Kavallierou and the No. 2 Diane Gard but has already beaten the No. 4 Carol Randall and remained unbeaten in the Rose Bowl and the Sussex inter-league championships. In reserve at Chelsea College we still have ex-junior international Sandra Goldsmith, Jersey No. 1 Julie Bush and several others of junior county standard.

In the Coca-Cola trophy only Brighton survive in the former Wilmott cup section with Roger Chandler, Sam Ogundipe and Arthur Downer drawn to meet Croydon in the zone final. Croydon are leaning heavily on Crawley players Keith Horton and Terry Riley. Horton is currently being watched by the Sussex selectors and must stand a good chance of breaking into the Sussex II side if any of the three present choices John Clarke, Robin Stace and Arthur Downer should falter.

In the Rose Bowl, once again Hastings and Eastbourne clash in the Sussex final with Hastings suffering from the "loss" of Joyce Sheppard who is expecting an addition to the family soon. Also expecting a happy event is Crawley's Beverley Godfrey.

Touching briefly on coaching in the November issue I omitted to mention the excellent work being done by one of the youngest coaches in the country, Brian Spicer of Bexhill and London. He is a live-wire coaching secretary for Sussex who has really got things on the move with regular sessions at Haywards Heath and other venues. Brian also is n.p. captain for the unbeaten Sussex second team—what he lacks in experience he more than makes up for in enthusiasm.

Despite their 6-3 defeat by Essex, the Sussex premier side is still riding high with plenty more surprises in the bag for their remaining matches. The major headache for the county's selectors and supporters is still the inescapable fact no young players are developing fast enough to challenge for the places occupied for so long by Roger Chandler, Sam Ogundipe and Peter Williams.

the top choice - make it yours JAQUES T.T. EQUIPMENT

'DENIS NEALE' bat

for greater speed and better balance.

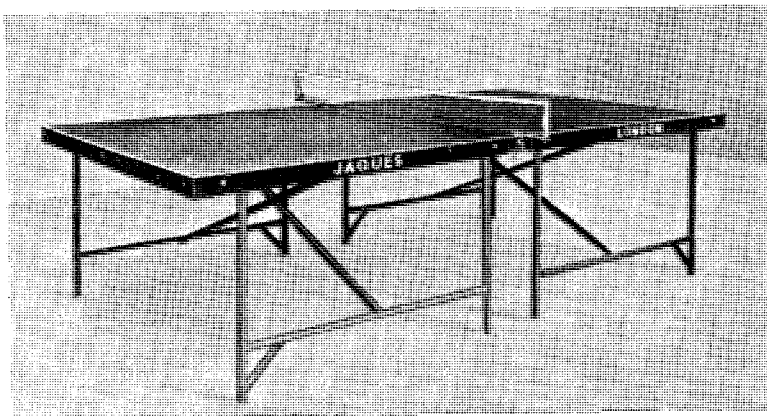
Go sure-footed through the season with

the new 'DENIS NEALE' shoes

Super-light with real leather uppers and special non-slip soles. All sizes available.

TABLES

Jaques Tables have been selected exclusively by the ETTA for all international matches and major events 1970/71. Now obtainable with metal legs for lightness. There is a model for Tournament, Club or Home use.



JAQUES T.T.
Equipment from all good sport shops and stores. If you cannot find the item you want write for free catalogue and price list to

Jaques

& Son Ltd.

THORNTON HEATH, SURREY CR4 8XP. Tel. 01-684 4242

Open Tournament Survey

Contributed by:—

**RON RIGG, TREVOR HARRIS
and LAURIE LANDRY**

Cheshire's former international, Judy Heaps, made a triumphant return to top class table tennis in the Cumberland 2-Star Open played at Workington on Nov. 28.

Out of the game for almost two years, Judy figured in three finals and collected the title from two of them, looking every inch the class player she undoubtedly is.



Judy Heaps (Cheshire) here seen inspecting her plaque after winning the English Closed women's doubles title in 1968-69 with Kent's Pauline Piddock.

Photo' by Peter Madge

After disposing of Cumberland's Clarice Rose in the quarters, and Liverpool's Val Lee in the semis, the real test came in the final of the women's singles when she was opposed by Yorkshire's Linda Bashford.

But Judy was always in command, coupling a sound defence with some excellent counter hitting to take the title in straight games. Judy also took the women's doubles title in partnership with Glasgow junior, Lesley Montague, but had to be content with the runner-up prize in the mixed when she and Brian Kean were defeated by the holders, Alan Ransome and Miss Bashford.

The men's and junior boys' singles events were robbed of some of their glamour by the absence of double title holder, Nicky Jarvis, who was involved in a compulsory Schools' Tournament in the North-east, but it is doubtful if even he could have stopped the march of Hull's Tony Clayton in the men's event.

Clayton continued his excellent form this season by going through the tournament without dropping a game. In the semis, the Yorkshireman beat Malcolm Corking, but Ransome was taken to a decider by Scottish No. 2 Eric Sutherland. Clayton collected his second title when partnered by Tony Boasman in the men's doubles.

The junior boys' was undoubtedly the best final of the lot, Boasman defeating highly ranked Jimmie Walker in a scintillating set in which he came from behind in both the final

games to pip Walker on the post and regain the title that he lost last season. The junior girls' title went to Teesside's Ann McReddie and added to that which she won in the North of England at Manchester.



Tony Clayton (Yorkshire) winner of the men's s.ngles at Workington and having a whale of a season.

Photo' by Cliff Darley

NEWBURY

Although a few of the well known names were missing at the Newbury Open played at the Corn Exchange on Nov. 28/29—due to the Scandinavian Open—the high standard of play and the sporting spirit of those participating, led to a highly successful weekend.

In the men's singles, Welshman Graham Davies, fresh from his fine win over Denis Neale in the Midland Counties Open the previous weekend, lost to hard-hitting Ron Penfold in the fourth round, as did Brian Burn in the quarters.

But the Surrey man was no match for Alan Hydes in the semis, the Barnsley left-hander going on to account for Tony Piddock in a good final.

Major upset in the women's singles, was the semi-final defeat of Shelagh Hession by Susan Howard who could not repeat her giant killing act in the final when opposed by Judy Williams.

The women's doubles final, often an uninteresting affair, captivated the entire hall when Hession/Williams beat Lesley Radford/Diane Simpson, as it did at Warley.

SOUTHEND

Denis Neale suffered yet again in the Southend Open, played over the weekend Dec. 12/13, when he lost, in the quarters, to "Connie" Warren.

Another star to go under to the Surrey 'comet' was Trevor Taylor beaten in two-straight by Cornelius J. But there the story must end for, in the final, Chester Barnes reversed the proceedings winning 21-12, 23-21 after being down 15-20 in the second. Hydes too was a Barnes victim, in the semis, having earlier been called upon to emulate Houdini when escaping from Barry Meisel in a deciding game which saw the Yorkshireman 20-16 up, then 20-21 down before winning 23-21!

There were shocks too in the women's singles won by Lesley Radford whose victims included such crown heads as those belonging to Judy

Williams, Karenza Mathews and Shelagh Hession. Miss Hession also produced one 'out of the hat' in beating Jill Shirley albeit 22-20 in the decider.

The men's doubles ran more to form with Barnes and Taylor accounting for Neale and Hydes but, in the women's doubles, another major upset occurred when the Howard sisters, Susan and Linda, disposed of Miss Shirley and Mrs. Mathews and went on to win the title against Mrs. Radford and Diane Simpson.

Nor were the shock results confined to the senior events. Oh no, Ian Horsham and Susan Beckwith maintained the upsets with final wins over Nicky Jarvis and Linda Howard respectively to tumble the national No. 1's.

MIDDLESEX 3-STAR

And so to Swiss Cottage for the Gillette sponsored Middlesex 3-Star Open, over the weekend Dec. 19/20, when only Alan Hydes, nursing a closed-up eye, failed to report to Geoff James' gun.

On this occasion Denis Neale really came into his own following up his win in the Nissen tournament by again accounting for Chester Barnes despite being taken to three.

"Les" Haslam was afforded a walk-over into the semis as his opponent, Malcolm Sugden — stretched to three hard games by Brian Burn in the previous round—retired with a bad back.

Predictable too were the women's singles finalists, Jill Shirley and Karenza Mathews, with Jill the victor. In the semis, Karenza avenged her fall from grace by beating Lesley Radford, her conqueror at Southend.

What shocks there were came from Linda Howard who beat Miss Hession and, against Pauline Piddock, led 19-17 in the second game after winning the first 21-19. Sister Sue went out to Jill Shirley 13, -12.

Men's doubles winners, Barnes and Taylor, had to save match point at 20-21 in the decider to Tony Clayton and Laurie Landry scraping home -18, 18, 22.

Nicky Jarvis returned to winning ways by taking the boys' singles title for the third successive year beating Kent's Paul Guttormsen (shock winner over Jimmie Walker) in a one-sided final.

No such re-entrenchment for top girl Linda Howard in the junior girls' event as she was beaten, in the semis, by Janet Hellaby who, in turn, lost to Lynda Chesson.

Cumberland Open

Men's Singles: Semi-finals:

L. A. CLAYTON (Yorks.) bt M. Corking (Durham) 18, 16;
A. RANSOME (North'd) bt E. Sutherland (Scotland) 15, -18, 12.

Final:

CLAYTON bt Ransome 15, 20.

Women's Singles: Semi-finals:

L. BASHFORD (Yorks.) bt M. Minto (Durham) 13, 9;
J. HEAPS (Ches.) bt V. Lee (Lancs.) 14, 6.

Final:

HEAPS bt Bashford 18, 19.

Men's Doubles: Final:

A. BOASMAN (Lancs.)/CLAYTON bt Ransome/J. Walker (Yorks.) -21, 8, 12.

Women's Doubles: Final:

HEAPS/L. MONTAGUE (Scotland) bt P. Dawson (Yorks.)/J. Green (Ches.) 10, 17.

Mixed Doubles: Final:

RANSOME/BASHFORD bt I. Robertson (North'd)/Green -18, 14, 19.

Boys' Singles: Semi-finals:

WALKER bt C. Taylor (Lancs.) 15, 20;
BOASMAN bt D. Parker (Lancs.) 15, 15.

Final:

BOASMAN bt Walker -13, 20, 20.

Girls' Singles: Semi-finals:

MONTAGUE bt R. Jaeger (Lancs.) 15, 13;

A. McREDDIE (Yorks.) bt S. Manning (Lancs.) 21, -14, 16.

Final:

McREDDIE bt Montague 17, -12, 16.

Newbury Open

Men's Singles: Quarter-finals:

A. Hydes (Yorks.) bt D. Holland (Gloucs.) 9, 13;

R. Penfold (Surrey) bt B. Burn (Warwks.) -16, 16, 14;

M. Johns (Ches.) bt D. Munt (Warwks.) 17, -11, 18;

A. Piddock (Kent) bt O. Haslam (Middx.) 15, 11.

Semi-finals:

HYDES bt Penfold 12, 10;

PIDDOCK bt Johns 17, -16, 17.

Final:

HYDES bt Piddock 13, -16, 17.

Women's Singles: Semi-finals:

J. WILLIAMS (Sussex) bt L. Radford (Essex) 17, 11;

S. HOWARD (Surrey) bt S. Hession (Essex) 10, 14.

Final:

WILLIAMS bt Howard 10, 15.

Men's Doubles: Semi-finals:

BURN/HYDES bt K. Baker/C. Morris (Kent) 17, 17;

HASLAM/JOHNS bt H. Buist (Kent)/Piddock 19, 13.

Final:

BURN/HYDES bt Haslam/Johns 17, -14, 16.

Women's Doubles: Semi-finals:

HESSION/WILLIAMS bt S. Lisle (Lancs.)/K. Perry (Staffs.) 14, 10;

RADFORD/D. SIMPSON (Essex) bt L. Howard (Surrey)/Howard -17, 20, 17.

Final:

HESSION/WILLIAMS bt Radford/Simpson 17, -24, 7.

Mixed Doubles: Semi-finals:

JOHNS/SIMPSON bt Piddock/S. Howard -14, 18, 15;

MUNT/WILLIAMS bt R. Chandler (Sussex)/M. Walker (Middx.) 19, 16.

Final:

JOHNS/SIMPSON bt Munt/Williams -15, 16, 11.

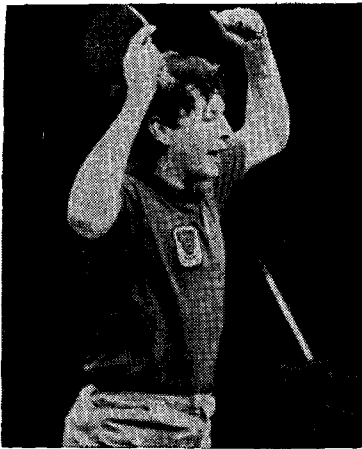
Veteran Singles: Semi-finals:

R. HARRISON (Berks.) bt A. Shepherd (Essex) 13, 15;

P. LECKIE (Bucks.) bt Miss J. R. Williams (Bucks.) 13, 16.

Final:

HARRISON bt Leckie 9, 12.



Denis Neale (Yorkshire) claims an 'edge' but Surrey's "Connie" Warren implies, by gesture, that it was 'a foot wide'.

Photos' by Cliff Darley

Southend Open

Men's Singles: Quarter-finals:

C. Barnes (Essex) bt P. Radford (Essex)

11, 11;

A. Hydes (Yorks.) bt B. Johns (Ches.)

8, 15;

T. Taylor (Essex) bt P. Taylor (Beds.)

13, 17;

C. Warren (Surrey) bt D. Neale

(Yorks.) -13, 18, 19.

Semi-finals:

BARNES bt Hydes 13, 18;

WARREN bt Taylor 13, 18.

Final:

BARNES bt Warren 12, 21.

Women's Singles: Semi-finals:

S. HESSION (Essex) bt J. Shirley

(Bucks.) 18, -12, 20;

L. RADFORD (Essex) bt K. Mathews

(Middx.) 14, 17.

Final:

RADFORD bt Hession 11, 8.

Men's Doubles: Semi-finals:

HYDES/NEALE bt I. Horsham/

D. Johnson (Essex) 14, 13;

BARNES/TAYLOR bt B. Burn

(Warwks.)/D. Brown (Essex)

-15, 10, 19.

Final:

BARNES/TAYLOR bt Hydes/Neale

-19, 20, 14.

Women's Doubles: Semi-finals:

L. HOWARD (Surrey)/S. HOWARD

bt Mathews/Shirley 16, -12, 18;

RADFORD/D. SIMPSON (Essex) bt

Hession/J. Williams (Sussex)

-14, 14, 18.

Final:

HOWARD/HOWARD bt Radford/

Simpson -16, 11, 15.

Mixed Doubles: Semi-finals:

BARNES/MATHEWS bt Taylor/

Shirley -16, 6, 9;

NEALE/S. HOWARD bt Hydes/

Williams 15, -15, 18.

Final:

BARNES/MATHEWS bt Neale/

Howard 21, 17.

Boys' Singles: Semi-finals:

JARVIS bt P. Taylor 12, -18, 18;

HORSHAM bt M. Harper (Herts.)

-16, 13, 5.

Final:

HORSHAM bt Jarvis -8, 14, 21.

Girls' Singles: Semi-finals:

L. HOWARD bt A. Painter (Middx.)

17, 19;

S. BECKWITH (Essex) bt G. Locke

(Surrey) 17, 11.

Final:

BECKWITH bt Howard -21, 15, 15.

Veteran Singles: Semi-finals:

P. BENING (Surrey) bt J. Osborne

(Essex) 19, 13;

K. SNAITH (Essex) bt A. Shepherd

(Essex) 17, 12.

Final:

SNAITH bt Bening 14, 18.

(Warwks.)/D. Brown (Essex)

-15, 10, 19.

Final:

BARNES/TAYLOR bt Hydes/Neale

-19, 20, 14.

Women's Doubles: Semi-finals:

L. HOWARD (Surrey)/S. HOWARD

bt Mathews/Shirley 16, -12, 18;

RADFORD/D. SIMPSON (Essex) bt

Hession/J. Williams (Sussex)

-14, 14, 18.

Final:

HOWARD/HOWARD bt Radford/

Simpson -16, 11, 15.

Mixed Doubles: Semi-finals:

BARNES/MATHEWS bt Taylor/

Shirley -16, 6, 9;

NEALE/S. HOWARD bt Hydes/

Williams 15, -15, 18.

Final:

BARNES/MATHEWS bt Neale/

Howard 21, 17.

Boys' Singles: Semi-finals:

JARVIS bt P. Taylor 12, -18, 18;

HORSHAM bt M. Harper (Herts.)

-16, 13, 5.

Final:

HORSHAM bt Jarvis -8, 14, 21.

Girls' Singles: Semi-finals:

L. HOWARD bt A. Painter (Middx.)

17, 19;

S. BECKWITH (Essex) bt G. Locke

(Surrey) 17, 11.

Final:

BECKWITH bt Howard -21, 15, 15.

Veteran Singles: Semi-finals:

P. BENING (Surrey) bt J. Osborne

(Essex) 19, 13;

K. SNAITH (Essex) bt A. Shepherd

(Essex) 17, 12.

Final:

SNAITH bt Bening 14, 18.

Women's Singles: Semi-finals:

J. SHIRLEY (Bucks.) bt P. Piddock

(Kent) 9, 17;

K. MATHEWS (Middx.) bt L. Radford

(Essex) -16, 17, 10.

Final:

SHIRLEY bt Mathews 18, 15.

Men's Doubles: Semi-finals:

BARNES/TAYLOR bt I. Horsham/

D. Johnson (Essex) 17, 19;

HASLAM/JOHNS bt Brown/Neale

20, 17.

Final:

BARNES/TAYLOR bt Haslam/Johns

14, 19.

Women's Doubles: Semi-finals:

MATHEWS/SHIRLEY bt S. Hession

(Essex)/J. Williams (Sussex)

12, -23, 13;

RADFORD/D. SIMPSON (Essex) bt

L. Bashford (Yorks.)/Piddock 18, 13.

Final:

MATHEWS/SHIRLEY bt Radford/

Simpson 14, 18.

Mixed Doubles: Semi-finals:

TAYLOR/SHIRLEY bt C. Warren/

J. Warren (Surrey) 14, -11, 16;

S. OGUNDIPE (Sussex)/WILLIAMS

bt K. Beamish (Essex)/Hession

-21, 6, 12.

Final:

TAYLOR/SHIRLEY bt Ogundipe/

Williams 12, 19.

Boys' Singles: Semi-finals:

N. JARVIS (Yorks.) bt P. Taylor

(Beds.) 7, -21, 16;

P. GUTTORMSEN (Kent) bt J.

Walker (Yorks.) 15, -10, 21.

Final:

JARVIS bt Guttormsen 12, 11.

Girls' Singles: Semi-finals:

L. CHESSON (Kent) bt S. Beckwith

(Essex) 21, 16;

J. HELLABY (Essex) bt L. Howard

(Surrey) -26, 21, 9.

Final:

CHESSON bt Hallaby -14, 20, 16.

Veteran Singles: Semi-finals:

M. CLOSE (Middx.) bt J. Osborne

(Essex) 8, 12;

K. SNAITH (Essex) bt T. Donlon

(Ches.) 16, 4.

Final:

CLOSE bt Snaith -15, 10, 18.

Middlesex Open

Men's Singles: Quarter-finals:

D. Neale (Yorks.) bt D. Brown (Essex)

10, 11;

O. Haslam (Middx.) w.o. M. Sugden

(Scotland) scr.;

T. Taylor (Essex) bt M. Johns (Ches.)

12, 15;

C. Barnes (Essex) bt A. Piddock (Kent)

10, 15.

Semi-finals:

NEALE bt Haslam 24, 13;

BARNES bt Taylor 11, 19.

Final:

NEALE bt Barnes 12, -22, 13.

Women's Singles: Semi-finals:

J. SHIRLEY (Bucks.) bt P. Piddock

(Kent) 9, 17;

K. MATHEWS (Middx.) bt L. Radford

(Essex) -16, 17, 10.

Final:

SHIRLEY bt Mathews 18, 15.

Men's Doubles: Semi-finals:

BARNES/TAYLOR bt I. Horsham/

D. Johnson (Essex) 17, 19;

HASLAM/JOHNS bt Brown/Neale

20, 17.

Final:

BARNES/TAYLOR bt Haslam/Johns

14, 19.

Women's Doubles: Semi-finals:

MATHEWS/SHIRLEY bt S. Hession

(Essex)/J. Williams (Sussex)

12, -23, 13;

RADFORD/D. SIMPSON (Essex) bt

L. Bashford (Yorks.)/Piddock 18, 13.

Final:

MATHEWS/SHIRLEY bt Radford/

Simpson 14, 18.

Mixed Doubles: Semi-finals:

TAYLOR/SHIRLEY bt C. Warren/

J. Warren (Surrey) 14, -11, 16;

S. OGUNDIPE (Sussex)/WILLIAMS

bt K. Beamish (Essex)/Hession

-21, 6, 12.

Final:

TAYLOR/SHIRLEY bt Ogundipe/

Williams 12, 19.

Boys' Singles: Semi-finals:

N. JARVIS (Yorks.) bt P. Taylor

(Beds.) 7, -21, 16;

P. GUTTORMSEN (Kent) bt J.

Walker (Yorks.) 15, -10, 21.

Final:

JARVIS bt Guttormsen 12, 11.

Girls' Singles: Semi-finals:

L. CHESSON (Kent) bt S. Beckwith

(Essex) 21, 16;

J. HELLABY (Essex) bt L. Howard

(Surrey) -26, 21, 9.

Final:

CHESSON bt Hallaby -14, 20, 16.

Veteran Singles: Semi-finals:

M. CLOSE (Middx.) bt J. Osborne

(Essex) 8, 12;

K. SNAITH (Essex) bt T. Donlon

(Ches.) 16, 4.

Final:

CLOSE bt Snaith -15, 10, 18.

Middlesex Open

Men's Singles: Quarter-finals:

D. Neale (Yorks.) bt D. Brown (Essex)

10, 11;

O. Haslam (Middx.) w.o. M. Sugden

(Scotland) scr.;

T. Taylor (Essex) bt M. Johns (Ches.)

12, 15;

C. Barnes (Essex) bt A. Piddock (Kent)

10, 15.

Semi-finals:

NEALE bt Haslam 24, 13;

BARNES bt Taylor 11, 19.

Final:

NEALE bt Barnes 12, -22, 13.

Women's Singles: Semi-finals:

J. SHIRLEY (Bucks.) bt P. Piddock

(Kent) 9, 17;

K. MATHEWS (Middx.) bt L. Radford



John Woodford continues with **CONTROVERSY**

1971—a new year and a good time to look at a subject I have often heard discussed but no one has dared to put it into writing—the embarrassing, disturbing and unfair situation frequently created when parents, fiances and boy-friends umpire tournament matches in which their children, husbands, wives or future spouses are involved . . .

Human nature being what it is, everyone I have spoken to accepts that the well-meaning umpires (qualified or not) cannot possibly be expected to give un-biased judgment on disputed and dodgy points not to mention other problems that can arise in any match at any time.

I hear of a county that may attempt later this year to bring in rules for its own events to try and solve this problem. I should be pleased to hear of any other league or county where relevant rules may already exist.

The major snag is all too apparent. At many lesser tournaments and especially junior opens the lack of "unconnected" umpires is appalling. This is one of the biggest problems facing tournament organisers today and should be high on the agenda of the E.T.T.A.'s umpires committee.

Often, especially in the later stages of junior events, play might not finish without the umpiring help of parents, etc., but so much hard feeling, heartache and tears can be caused by the presence of a related umpire.

Opponents are usually too polite and afraid of causing preliminary ill-feeling by refusing to accept a "connected" umpire but something should be done before the first punch-up between a couple of irate fathers. Please do not write to suggest I am exaggerating this problem, it happens—and seems to be increasing all the time.

There is also a strong case to prevent coaches from umpiring their pupil's matches but I think this would be more difficult to control. A better start would be a voluntary arrangement by parents, etc., to restrict their offers of help, guided by the referee, to matches where "unconnected" competitors are playing.

I hope that readers of this column, now four months old, will appreciate that my object is to focus attention and to provoke thought on matters which in my view, are in need of airing. The subjects are, as the title suggests, "controversial". I should be disappointed if everybody agreed with my views—in fact I expect to enrage quite a few people but I hope all readers will bear in mind that the only purpose of the sometimes hard-hitting words is the hope that they may lead to plain thinking and constructive action. So, for or against, let's have YOUR views!

and KEITH WATTS lends his support to the topic of . . .

'MISGUIDED EXCURSION'

As John Woodford and John Wright may feel inhibited from replying to Malcolm Scott's attack on them for airing their views on the Veterans' Division of the County Championships, I have decided to enter the arena on their behalf. The fact is that in his somewhat heated outburst Malcolm has completely failed to answer any of John Woodford's points and has introduced a mass of irrelevances. The only remark in his letter which had any bearing on the argument was when Malcolm had to agree with the exclusion of Veterans' Finals from staged Open Tournament finals, and surely the reasoning which led to that decision was precisely the same as that which John Woodford was trying to put across in his article.

As a fellow officer of the County Championships, I challenge Malcolm Scott's assertion that John had 'no right to voice his biased opinion publicly'. Because we hold office in an organisation we are not thereby reduced to silence and it could be argued that we may even be more entitled to have views which should be expressed. Certainly I cannot see Malcolm allowing anyone to interfere with his right of free speech. Anyway, what is a 'biased opinion'—presumably it is an opinion which is different from one's own, as I can see no reason for John Wright, John Woodford or for that matter myself to be biased about veterans. What Malcolm does not seem to realise is that John Woodford is a veteran who has spent over twenty years in the game.

This brings me to one of Malcolm Scott's principal complaints, the alleged slur on veterans who have contributed greatly to table tennis in the administrative field. As a veteran myself with forty years' work in table tennis behind me, I do not consider that that puts me in a position of omniscience, above all criticism by those who have only recently joined us.

If John Woodford's arguments were right then, it does not matter how long or short his service nor how long the service of his opponents. Some of Malcolm's personal references like the one about nappies were unworthy of him and did nothing to prove his case.

Incidentally, his reference to a unanimous vote of 21-0 was incorrect—it was a nem. con. vote—quite a different thing. There were about ten abstentions. Provided that people like John Wright and myself loyally carry out the wishes of the orga-

nisations that elect us to office, then we still retain the right to speak our mind on issues that affect the game.

and, on the same subject,
HARRY WALKER writes . . .

I think I am right in saying that we in Essex are not very happy about the remarks made in opposition to the Veterans' Division, especially the criticism made by my good friend John Woodford. He writes about the general public being asked to witness, and I quote—"a spectacle which often consists of greying, balding, sweating men far past their table tennis best, bent on 'pushing' to defeat their old rivals".

In County matches involving veterans, I very much doubt if it was the intention to invite the public to attend. In Essex, an admission charge is only applicable for first team matches, in the Premier Division. We were, I think, the pioneers of Veteran Divisions in our County inter-league matches, and at the present time we have five or more divisions with some leagues entering up to four teams.

No John, I think you are very wrong and I will finish up by quoting three words of advice given me by the late Corti-Woodcock—"CREATE TABLE TENNIS". That is our job, John!

FUND RAISING
TOP QUALITY BALL PENS
DIESTAMPED WITH 30 GOLD
LETTERS. £1.75 (35/-) per
GROSS POST PAID. SALE OR
RETURN SAMPLES FREE.

PLEASE TRY BEFORE YOU BUY.

ABBEY WHOLESALE,
77 LIVERPOOL ROAD, STOKE.
ST4 1AE.

DURHAM NOTES

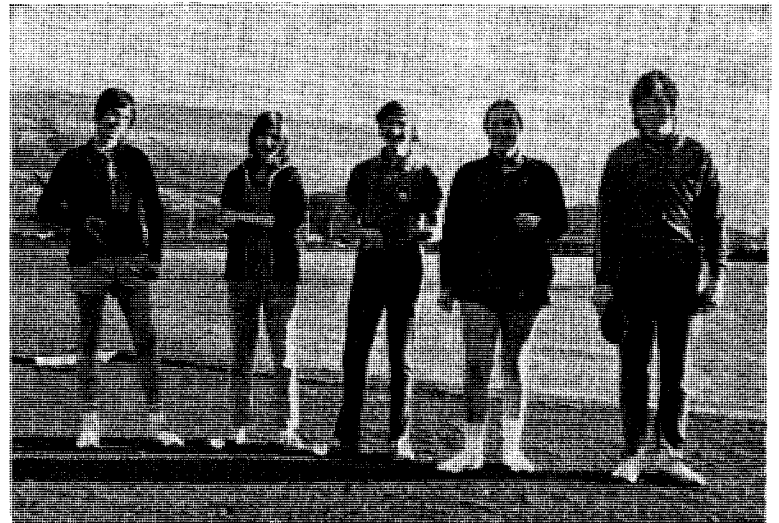
by Fred Inch

MAY I, through this column, wish all my friends a Prosperous and Happy 1971 especially my Durham County colleagues. I list below my NEW YEAR RESOLUTIONS:—

1. To endeavour, with the recommendation and support of both Durham County and Yorkshire Associations to STOP the formation of the proposed Teesside County Association, so that a few individuals do not undermine the basic system of County Associations throughout the Country.
2. To help the Stockton League to become, once and for all, genuine working and playing members of Durham County and ensure that their members realise that greater opportunities to develop and expand lie with the Durham County Association.
3. To revise and gain recognition of the Durham County rules through a working Rules Committee, the A.G.M., and eventually the English T.T.A.
4. To Inaugurate a new and exciting competition for the 1971/72 season and to streamline all other County Competitions.
5. To assist all leagues and members in Durham County with any problems they have and to advise them to the best of my ability.

"FULL HOUSE"

MEMBERSHIP of the E.T.T.A.'s 100 Club closed during the weekend of the English Closed with the enrolment of Mrs. Doreen Stannard, Umpires Committee Secretary of the Middlesex T.T.A. A full list of members will be published in the February magazine.



A quintet of young tykes pose in December sun at Merthyr Tydfil before their Junior Premier Division match with Glamorgan. Left to right: David Alderson, Judith Walker, David Rayner, Lynda Sutton, Jimmy Walker. For Middlesbrough Boys, Alderson and Walker, the weekend involved a round trip of 600 miles, including a match en route with Warwickshire. Alderson made an unbeaten debut in these matches, and at 13 is the youngest player ever to represent Yorkshire.

Photo' by Tony Ross.

National Club Championships

by Keith Ponting

NINE NEWCOMERS IN MEN'S SECTION

Ormesby T.T.C., champions of the Middlesbrough and North Yorkshire League and winners of last season's National Club Championships, have again been entered in this season's competition which, in the men's section, has attracted 48 entries, an increase of 9 on last season.

As like last season, eleven teams have been entered in the women's section headed by the Gainsford Club of Central London, winners in 1969/70.

In all, some 26 new championship-winning teams will compete this season but what a pity that all of last term's entrants have not returned. It would have made for a great competition for there is no reason why it should not rival the Coca-Cola National Team Trophy Competitions in popularity.

Few teams were engaged in the first round which was scheduled for completion by Jan. 2 but the line-up for Round 2 (to be completed by Feb. 6) is as follows:—

MEN:

Zone 1

Moor Allerton (Leeds)
v. Ormesby (Middlesbrough)
Bye: Harrogate Villa (Harrogate).

Zone 2

Waterpark (Manchester)
v. Lytham St. Annes Y.M.C.A. (Blackpool).

Silcocks (Bolton)
v. Darwen Sports Council (B'burn)
or English Electric (Liverpool).

Zone 3

Highgate (Grimsby)
v. Sutton Bridge (Wisbech)
or Notts. Y.M.C.A. (Notts.).
Penmaen (Boston) or
College of Tech (Lincoln)
v. King Richard's Road (Leics.).

Zone 4

Cope Chat (Stroud)
v. Weston Y.M.C.A. (Bristol).
Cookhill (Redditch)
v. Mere (Warminster).

Zone 5

St. Neots L.T.C. (St. Neots)
or St. Neots (Bedford)
v. Broomwade (High Wycombe).
or Chesham "A" (Chilterns).
Stotfold Liberal (N. Herts)
or Apsley Village (Hemel)
v. Enfield Highway (Cheshunt)
or Hyde (Welwyn).

Zone 6

Gidea Park (Romford)
or Fellows Cranleigh (E. London)
v. Bairds Taverners (W. Essex)
or Maldon Wanderers (Chelmsford).
Dartford Y.M.C.A. (Gravesend)
or Blues (Tunbridge Wells)
v. Little Foxes (Tonbridge)
or East Grinstead C.C. (E. Grinstead).

Zone 7

Whitbreads (London B.H.)
or Elfes Ltd. (Ilford)
v. John Keble (Willesden).
Ellenborough T.T.C. (N. Middx.)
or Kenton (Wembley & H.)
v. Met. Water Board (Walthamstow)
or Ibis (Insurance Offices).

Zone 8

Four T's (Southampton)
or Community Centre Blues (Portsmouth)
v. A.W.R.E. (Newbury)
or St. Annes (Staines)
Reading G.P.O. (Reading)
v. Y.M.C.A. (Bournemouth).

WOMEN:

Zone 1

British Legion (Grimsby)
v. Ormesby (Middlesbrough).

Zone 2

Central Y.M.C.A. (Birmingham)
v. St. Neots (Bedford)
or Letchworth Settlement (N. Herts.).

Zone 3

Gainsford (C. London)

or Pearl (Insurance Offices)
v. Crittall/Hope (Chelmsford)
or Whitbreads (London B.H.).

Zone 4

Merton (Bournemouth)
v. Four T's (Southampton).

WILTSHIRE NOTES

by Ken Bostock

Wiltshire League—Division One

Salisbury "A" 9 (A. Ward 3, D. Waters 3), Salisbury "B" 1,
West Wilts 7 (J. Ford 3), Devizes 3.
Warminster 5 (T. Kelly 3), Swindon 5.
Salisbury "B" 4, Warminster 6 (R. Smith 3).

Devizes 7 (D. Yates 3), Salisbury "A" 3.

Salisbury "A" 7, West Wilts 3.
Swindon 8 (A. Bruce 3), Salisbury "B" 2.

Junior Division

Salisbury 8 (D. Tomlinson 3, S. Veale 3), West Wilts 2.

Division One Table

	P	W	D	L	F	A	Pts.
West Wilts	4	3	0	1	25	15	6
Warminster	3	2	1	0	18	12	5
Salisbury 'A'	5	2	1	2	27	23	5
Devizes	3	2	0	1	17	13	4
Swindon	4	1	2	1	19	21	4
Salisbury 'B'	5	0	0	5	14	36	0



Go to your
Mitre sports
dealer and
get him to
show you

STIGA
championship
bats.

Why settle
for less?



MITRE SPORTS, FITZWILLIAM STREET, HUDDERSFIELD



The Coca-Cola National Team Competition

by Keith Ponting

HOLDERS STILL IN POSSESSION

Even without the services of Denis Neale, WILMOTT CUP holders NORTH YORKSHIRE easily accounted for Leeds 5-1, veteran Len Browning alone stemming the tide, and CENTRAL LONDON, holders of the J.M. ROSE BOWL, represented by Karenza Mathews, Judy Williams and Shelagh Hession, had no trouble in disposing of Sutton 5-0.

Thanks to all leagues for their co-operation in sending in the score cards so promptly thus helping tremendously

with the preparations for the next round. Second round results:—

WILMOTT CUP

BURNLEY 9 HORWICH 0

A comfortable win for the home team, with only one set needing a decider.

BOSTON 7 GRIMSBY 2

Brian Hill and Mike East were unbeaten for Boston.

SOUTHAMPTON 8 MAIDENHEAD 0

Chris Shetler, Keith Summerfield and Wilts. County player Bill Moulding were far too strong for the brave trio from Maidenhead.

EXETER 5 PLYMOUTH 4

This thriller produced some very fine play. The visitors opened up with a 3-0 lead, but Exeter fought back to go in front 4-3, with captain Mike Rattue leading the way. Dave James levelled for Plymouth, and it was left for Mike Putland to beat P. Dunstan for a home victory. Paul Stone and Bob Parkins also contributed to this most sporting of contests.

BOLTON 6 BLACKPOOL 1

Home team debuts for Mike Johns and Derek Schofield who were ably assisted by Bob Kelly, the Lancashire No. 3. Congratulations to Bob, who was married on Dec. 12, and to Derek and his wife, whose fourth child was born just after the match.

PRESTON 4 LIVERPOOL 5

A fine maximum by Tony Clayton saw the Liverpoolians through despite spirited opposition from Donald Parker any Tony Rigby.

DERBY 4 NOTTINGHAM 5

T. Bull beat F. O'Sullivan to give the visitors a thrilling last set win.

ST. ALBANS 0 OXFORD 6

C. Jackson, A. Wolff and S. Hahn had little trouble.

GT. YARMOUTH 6 ELY 3

There were some very close sets but D. Tasker was unbeaten for the winners.

MANCHESTER 7 HYDE 1

Brian Baldwin played well for Hyde, otherwise Tony Boasman, Kevin Forshaw and Roy Crusham had matters very much their own way.

SPALDING 1 CHESTERFIELD 5

John Beaumont won the first set for the Lines. team, but led by former Somerset No. 1 Eric Hall, the 'spire' men ran out comfortable winners.

BIRMINGHAM 9 LEICESTER 0

As the score suggests, very little trouble for the home team.

CAMBRIDGE 5 NORWICH 4

Another fine maximum by Dick Clode helped Cambridge to an exciting win.

N. MIDDLESEX 3 BARKING 6

Some close affairs in this one, with Barking's D. Johnson in top form winning his three sets.

EAST GRINSTEAD 0 BROMLEY 6

Every set decided 2-straight.

WILLESDEN 7 CENTRAL

LONDON 2
In his Press Release, John Woodford described this match as the biggest clash of the round. Laurie Landry, Brian Wright, and Malcolm Sugden who was unbeaten, won well. In fairness it must be stated that the visitors were without Alan Lindsay and F. Nilam. Peter Williams claimed the visitors' two sets.

CROYDON 5 EASTBOURNE 2

After some early close finishes, Croydon were deserved winners.

LONDON BANKS 8 NEWBURY 1

J. Baxter's great effort in winning three for the Banks was all in vain.

BOURNEMOUTH 8 NEWBURY 1

A good win for Bournemouth and a mention for junior, Phil Crane who played well to support Brian Pickard and T. Smith.

LUTON 5 WELWYN 0

A clear-cut victory for Luton. C. Crowe beat D. Watts 30-28 in the third game of the fifth set.

GRAVESEND 8 TUNBRIDGE

WELLS 1
N. Beanes was the lone winner for the overplayed visitors.

CHESHUNT 5 WATFORD 4

B. White secured a maximum for the home trio.

BRISTOL 5 TAUNTON 4

This was a very good match with Roger Pendleton's victory over Brian Reeves the surprise. Johnny Wise was unbeaten for Bristol, Jimmy Andrews being his third victim for the decider. CHELMSFORD 0 EAST LONDON 9
No doubt about this one and all in 2-straight.

STAINES 5 GUILDFORD 0

Schooler, Davies and Welsman were far too strong for Guildford.

WORTHING 2 BRIGHTON 5

The first game between Robin Pierce and Sammy Ogundipe needed the Expedite Rule, with Sammy eventually coming out on top.

WALTHAMSTOW 1 ILFORD 7

Ian Horsham and Peter Radford had little trouble in winning their sets.

BECKENHAM 5 LONDON

CIVIL SERVICE 1
The score card suggests some close games. Tony Piddock the lone winner for the visitors.

HIGH WYCOMBE 5 DUNSTABLE 1

No need for the remaining sets.

ROSE BOWL

OXFORD 5 DUNSTABLE 0

A good performance by Oxford's women, who were always in command.

PETERBOROUGH 3 ELY 5

This one was all over when the visitors opened up with a 5-1 lead.

LONDON CIVIL SERVICE 5

ILFORD 3
The home team won the last three sets to clinch the match. Marie Know played well for them to win her three.

TAUNTON 6 WEST CORNWALL 3

The three sets for the visitors came from Miss S. Rapsey who played very well to beat the Beazer sisters and Miss R. Bryant.

WORTHING 3 HASTINGS 6

Mrs. M. Dignum and Miss S. Franklin were unbeaten for Hastings in this comfortable win.

WATFORD 8 ST. ALBANS 1

No less than six sets went to three but they all went to Watford.

GUILDFORD 7 S.W. MIDDLESEX 2

Ruth Miles with three wins and two each from Sue and Linda Howard won the day.

BASILDON 2 SOUTHEND 7

Miss L. Farthing was the best player on view.

HARLOW 5 LONDON BANKS 4

This was a very close match. The teams were level at 4-all and Mrs. V. Scripps beat Miss S. Warn 21-19 in the third to give the home team victory. A great effort by Miss S. Petre, who won all three for the visitors.

WILLESDEN 6 N. MIDDLESEX 3

Christine Mann was in excellent form for the winners.

BRIGHTON 0 EASTBOURNE 9

Linda Woodcock, who reached the final of this competition last season with Lowestoft, together with Sussex county's Nos. 3 and 4. Diane Gard and Carol Randall had it all too easy. No set needed a decider.

WELWYN 0 BEDFORD 6

No trouble for Bedford, with Mrs. A. Copperwheat, Miss A. Underswood and Mrs. B. Hammond in good form.

MAIDSTONE 5 BROMLEY 3

These teams were level at 3-all, but Maidstone won the next two. Betty Bird's three wins, in straight games, suggests she was the player in form.

MAIDENHEAD 3 NEWBURY 6

Two wins apiece for C. Houghton, J. Smith and J. Taylor were enough for the visitors.

EXETER 5 BRISTOL 4

With two ex-internationals in their line-up, Joan Crosby and Pam Mortimer, assisted by Maureen Spray, the home team won the first three sets. But Bristol's trio of June Watts, Pat Rowe and Joan Collier were not for taking matters lying down so that, with eight sets played, the match score stood at 4-all! It therefore needed Pam's experience to beat Joan Collier to win the match. Both Joan Crosby and Pam Mortimer have previously played for winning teams in this competition. Joan played for the Exeter team who were the first winners of the J.M. Rose Bowl in 1938/39 and, of course, Pam



THE TABLE OF THE FUTURE

TODAY Cannot warp : Easily moved in use at over 1,000 Clubs

* Tubular Steel Jigged Frame and Folding Undercarriage.

Hinged and folding Fitted with Retractable White Tyred Caster Wheels.

* Permanent Matt Finish. Washable.

* Three Mobile Models Fitted with Finnish Birch Tops. 12 mm., 18 mm., 24 mm.

* No more Loose Screws, Chipped Corners, Warped Surfaces.

* Surface Protected when not in use.

* Free Standing 5ft. x 5ft. x 10in. saving damage to table edges and wall.

* Patented in U.K., U.S.A., Belgium, Germany, France, Italy, Canada, Japan.

Silver Medal Award at 19th International Inventors Exhibition, Brussels, March, 1970.

Write for Illustrated Brochure to—

GYMNASIA LTD. Blue House Point Road
Stockton-on-Tees, Teesside
Tel.: Stockton-on-Tees 68964

Makers of Fine Gymnastic and Sports Equipment

National Team Competition cont.

had many successful years with Ann Jones (nee Haydon) playing for Birmingham. I feel it is a great tribute to their enthusiasm and love of our game that they are still playing so well and obtaining good results in the first division of the Exeter League.

NUNEATON 0 WEST BROMWICH 6
The visitors followed up their first round success with another resounding victory, with only one set going to three.

STOCKPORT 7 LIVERPOOL 2
A convincing win for the Cheshire side, Judy Heaps and Mrs. M. Lypnykyj doing the damage with three wins each.

BIRMINGHAM 4 LEICESTER 5
Congratulations Leicester on a really fine win. Although Doreen Griffiths won three for Birmingham, the visitors played exceptionally well to bring off a surprise win.

PORTSMOUTH 6 S.W. SUSSEX 3
A maximum for Mrs. D. Gray for the home team.

ST. NEOTS 6 READING 3
A particularly good performance by St. Neots' Miss B. Webb, who played well throughout.

NORTHUMBERLAND 9 LEEDS 0
Another one-sided affair, with only one set needing a decider.

ROMFORD 7 COLCHESTER 2
Miss J. Dyer played well to win two sets for Colchester, but Mrs. P. Lauder,

Mrs. A. Hewitt and Miss V. Lauder were never in danger.

CAMBRIDGE 1 LOWESTOFT 8
Last year's finalists had another clear-cut victory in this match with B. Killett ably supporting D. and J. Youngs.

GRIMSBY 3 SPALDING 6
Despite a brave maximum by Connie Moran, for Grimsby, Spalding had a comfortable win.

CARTER CUP
MAIDENHEAD 3 S.W. SUSSEX 6
S.W. Sussex, with County-ranked players S. Marley (1) and J. Avey (2), were made to fight hard against a keen Maidenhead side. The best set of the evening was between B. Sweetzer and Avey, with the former squeezing home 22-20 in the third.

BLACKBURN 5 BOLTON 4
A real cliff-hanger (this with the result in doubt until the final set, in which P. Airey beat Bob Jackson 21-15 in the decider. Keith Jackson of Blackburn was the 'star' of the match with three wins.

NORWICH 0 GT. YARMOUTH 9
A one-sided affair, but full marks to the Norwich lads for trying so hard against much stronger opposition.

SOUTHAMPTON 4 BOURNEMOUTH 5
These teams always produce a close result, and this match was no exception when the final set decided the issue. Another brilliant treble for Phil Crane.

CANTERBURY 5 N.W. KENT 4
Two evenly matched teams provided some exciting play. No player gained a maximum, an indication of the close contest.

LIVERPOOL 1 WIRRAL 8
John McNee, S. Fewtrell and C. Dunning were in top form only J. Marshall halting the proceedings.

EAST LONDON 9 ROMFORD 0
The home team have gone through the first two rounds without conceding a set. A very fine performance.

ST. NEOTS 0 WELLINGBOROUGH 9
The St. Neots' lads played bravely but were no match for P. Crawley, S. Crawley and A. Wallis.

HIGH WYCOMBE 0 WEMBLEY 9
Another apparently one-sided match for R. Phillips, R. Huson and J. Chernett.

BARKING 2 DAGENHAM 7
A good effort by D. Randall who won three for Dagenham. A pat on the back for P. Hunt who obtained Barking's two wins.

REDDITCH 1 COVENTRY 8
A clear-cut victory for Coventry's Frank Lazek, Martin Lilley and Daryl Jones.

LEICESTER 0 BIRMINGHAM 9
Leicester provided the shock result last season but the Birmingham lads had sweet revenge this time with Bob Broadmore, M. Davis and J. Nix winning their sets in straight games.

CRAWLEY 9 BRIGHTON 0
Another pat on the back for the Brighton team who never gave up trying against much stronger opponents.

BARROW 1 PRESTON 8
P. Broughton was the only winner for the home team.

HASTINGS 6 WORTHING 3
Three wins each for A. Soan and K. Farrier saw Hastings through.

ALDERSHOT 1 READING 8
The mainstays for the visitors were G. Harding and J. Crooks.

HULL 7 LINCOLN 1
Four sets went to three, but Hull won them all.

BASINGSTOKE 8 STAINES 1
C. Sargeant and M. Caudrey, supported by G. Iacona were too strong.

SHEFFIELD 3 N. YORKSHIRE 6
Alan Ransome's lads with two wins each go through.

NORTHAMPTON 1 CAMBRIDGE 8
P. Blincow won the last set for the home team beating Paul Day, meanwhile C. Dellar and M. Harper had three wins each for Cambridge.

WATFORD 4 LEIGHTON BUZZARD 5
M. Corrie won three in vain for Watford.

CHESHUNT 2 WILLESDEN 7
Julian Colin was in fine form for Willesden, winning his three sets comfortably.

COLCHESTER 6 HARLOW 3
A fine maximum by C. Carle was not good enough for Harlow.

CHESTERFIELD 4 BOSTON 5
Another very close match between two evenly matched teams. J. Brewster beat I. Taylor to win the match for Boston. N. Marples was unbeaten for Chesterfield.

BROMFIELD TROPHY
CHESTERFIELD 2 HULL 7
The strong Hull team won this match comfortably with Lynda Sutton well in command in winning her three sets,

but Janet Cooper made her work hard for her 21-18, 21-12 win. Miss Cooper also played well to win the two sets for Chesterfield.

NEWBURY 4 WORTHING 5
An unexpected win for the visitors against more experienced opponents. Very closely contested match throughout with the decision in doubt until the third game of the final set. Outstanding player on view was Linda Wales of Worthing, ranked No. 4 Junior in Sussex, with a fine maximum. Worthing win achieved by great determination and team spirit.

N. MIDDLESEX 9 LEIGHTON BUZZARD 0
J. Beaven, S. Hamilton and A. Painter played well to win so comfortably.

WILLESDEN 3 CHESHUNT 6
Two wins each for Susan Hartwell, Jane Hartwell and Lena Williams saw the visitors through despite a very fine maximum by Miss K. Deem for Willesden.

ROMFORD 4 DAGENHAM 5
Two well matched teams with Eileen Tarten again outstanding for Dagenham.

TAUNTON 8 BRISTOL 1
This very strong Taunton team too good for Bristol. Pat and Susan Beazer, with Rebecca Bryant will be hard to beat in this competition. Gill Westmore was the lone winner for Bristol.

BIRMINGHAM 5 LOUGHBOROUGH 4
A maximum by V. Russell with two wins by D. St. Ledger gave Birmingham a close win.

LINCOLNSHIRE CLOSED

by Bill Moran

MARATHON DOUBLES FINAL

Played at Grimsby, last month, the Lincs. Closed produced a game in the men's doubles final, between John Beaumont and Brian Edlington versus Brian Hill and Mike East, which was just about the longest seen for many a year.

Hill, Jean White and Connie Moran all reached three finals but none managed a 'clean-sweep'.

Results:—
M.S.: Semi-Final:
M. East (Boston) bt J. Beaumont (Spalding) 15, -16, 14; B. Hill (Boston) bt A. Robinson (Lincoln) 9, 14.

Final: HILL bt East 18, 14.
W.S.: Semi-Final:
C. Moran (Grimsby) bt M. Burgess (Spalding) 17, 20; J. White (Spalding) bt J. Robinson (Lincoln) 15, 14.

Final: WHITE bt Moran 14, -21, 21.
M.D.: Final:
BEAUMONT/B. EDLINGTON (Spalding) bt East/Hill 19, 32.

W.D.: Final:
BURGESS/WHITE bt K. Fisher (Grimsby)/Moran 14, 10.

X.D.: Final:
HILL/MORAN bt J. Armstrong (Lincoln)/White 17, 19.

B.S.: Final:
J. BREWSTER (Boston) bt P. Cator (Boston) 14, 19.

G.S.: Final:
P. HAMMOND (Spalding) bt J. Hackford (Grimsby) 21, 17.

V.S.: Final:
B. FINNERAN (Grimsby) bt R. King (Scunthorpe) 13, 18.

We are specialists in T.T. Equipment

DO YOU NEED ?

TIES—A club tie of your own. (Min. of 12).

BADGES—For shirts or tracksuits.

PENNANTS—Why not start a fashion in T.T. Give a pennant at your matches.

BATS—Stiga, Cor du Buy, every make.

SHOES—We have the latest and best for T.T. Lightweight, slip-proof, blue and white, supple, perfect—59/6 pair.

TROLLY—Move your table with a finger tip.

HOLDALLS—All types for T.T.

TABLES—Tournament, reconditioned and secondhand. Old tables taken in part exchange.

ALEC BROOK

A. D. B. (London) Ltd.

57 Blandford Street, London, W.1. Tel. 486-2021/2/3.

Scandinavian Open

Chuang beaten by Neale and Bengtsson

as collated by The Editor

This season's Scandinavian Open, played at Halmstad, Sweden over the period Nov. 26-28, marked the return of China to European competition for the first time since the cultural revolution suspended their activities in 1966.

But it was no fairy tale that unfolded for the Chinese men despite their juggernaut treatment of Norway in the first round of the men's team event in which Chou Lan-sun hammered off Sven Nordby 4 and 4, Li Fu-jung beat Roy Heggelund 6 and 13, and, in the doubles, Chuang Tse-tung and Li Ching-kuang saw off the Norwegian pair 8 and 7!

England's Chester Barnes and Denis Neale were next in line for the "treatment" and, having scraped home 3-2 against Sweden II in their opening match, but no-one gave them even a ghost of a chance.

Barnes was first into the "ring", his opponent being no less a personage than three times world champion Chuang Tse-tung and down went the Essex international 12 and 12.

"Next for shaving" was Neale beaten 20 and 15 by Li Fu-jung, himself three times a world singles finalist, and at that stage the die seemed well and truly cast.

It was at this stage of the proceedings that England's non-playing captain Bryan Merrett dispensed with the conventional and paired up Neale with Trevor Taylor to have a crack at Chuang partnered by Li Ching-kuang.

And the gamble paid off as the English pair quickly attuned themselves to win in two straight affording Neale the inspiration to pull off the upset of the tournament in beating Chuang Tse-tung 10 and 19 to level the match score at 2-all.

Now the fight was really on, and more so when Barnes won the first game of the deciding set against Li Fu-jung. But it was not to be, not even when Barnes went into an 8-1 lead in the decider after Li had levelled the set score at 1-all. From that point on Chester's attacking play was neutralised by an effective jab block-shot which "saved the face" of the Chinese.

But, in a similarly patterned match

against Hungary in the semis, Li Fu-jung failed to repeat his success against Istvan Jonyer whose last set win brought about China's downfall by 3-2.

And so elated, Jonyer, partnered by his compatriot Tibor Klampar, waltzed to a 3-0 final victory over Sweden, the holders, the great Alser losing to Jonyer -13, -9 and Stellan Bengtsson going under to Klampar -14, -15.

England's women were concerned in but one match only in their team event losing 0-3 to Czechoslovakia's Ilona Vostova and Alicia Grofova who, in turn, lost by a similar score to China's Lin Hui-ching and Cheng Min-chih the latter beating Miss Vostova 7 and 12!

The same Chinese duo were equally successful against Korea's Ailesa Lee and Joung Sook Choi in the final, but what shocks abounded in the men's team championships! A great event.

ALSER YET AGAIN

In the *Individual Events*, it was Sweden's European champion Hans Alser who brought off yet another triumph when he added the men's singles title to that of the Yugoslav Open which he won in Subotica in November.

It was his fellow-countryman Stellan Bengtsson who was the beaten finalist but only after five games all of which were filmed and rapturously applauded throughout.

Sweden's European Youth champion most certainly 'arrived' in this tournament for in his wake lay two Chinese, Yu Chang-chun (16, 19, 16) and, in the quarters, Chuang Tse-tung (18 in the fifth) not to mention Istvan Jonyer.

Alser's early victims comprised Chong Hyun Hong (Korea) and Heggelund (Norway) and, in the third round, our own Denis Neale who went under -18, -15, -11.

Should a testimonial fund be started for Alser at the end of the season, I have little doubt that Neale would be the first to contribute but not for altruistic reasons!

Neale began his run well enough by removing the Polish No. 1 Witold Woznica who, it may be recalled, beat French ace Jacques Secretin in the Europeans. And in Round 2, the Yorkshireman avenged Barnes's defeat

in Moscow when he beat Dutchman Bert van der Helm although it took him five games to clinch the issue.

Chester also began in sprightly fashion with a 3-straight dismissal of Sweden's Roif Andersson, and East Germany's Bernd Raue was likewise treated. But, as with Neale, Round 3 provided the gravestone solemnly chipped by Hungary's Jonyer.

Trevor Taylor, our third male representative, went out in the first round having equated a 2-0 lead obtained by Secretin only to lose -17 in the decider. The Frenchman fell in the next round to China's Li Ching-kuang.

In an event dominated by the Chinese, the women's singles brought little joy to create the face of Bryan Merrett. Both Karenza Mathews and Pauline Piddock failed to win a game in losing, respectively, to China's Li Ho-nan (-6, -15, -11) and Cheng Huai-ying (-15, -16, -12).

Jill Shirley did manage one round however, beating Sweden's Birgitta Radberg (14, -19, 16, 11) before losing to Li Li of China (-13, -13, -17) and there it ended.

But, in the distaff doubles, it was a different story. For Jill, paired with Hungary's Beatrix Kishazi, reached the exalted distance of the semi-final round.

Beaten, en route, were Sweden's Ulla-Marta Gustavsson and Lena Rundström and East Germany's Doris Hovestadt and Petra Stephan. Yet losing, over five games to China's Lin Hui-ching and Cheng Min-chih failed to tarnish the brilliance of their performance.

Small wonder then the approach of the Hungarian Association for the partnership to be continued in future top-line tournaments.

In this same event, Karenza and Pauline were badly drawn against the eventual winners, Li Li and Liang Lichen, but they put up a good performance before losing -11, 23, -19, -16.

Trevor Taylor renewed his acquaintance with Israel's Paul Pasternak in the men's doubles and the pair began by ousting Denmark's Claus Petersen and Niels Poulsen before losing to the Czechs Milan Orlowski and Jiri Turai (-19, -19, -10).

Barnes and Neale made their bow in Round 2 with a good win over the Czech Jaroslav Kunz partnered by Matyas Beleznai.

Prospects looked bright for a breakthrough into the quarters when they led China's Chou Lan-sun and Yu Chang-chun, but back stormed the men from Peking to win 16, -15, -16, 15, 14.

We did make the quarters in the mixed where Barnes and Pauline Piddock took on the might of former world champion Chuang partnered by Lin Hui-ching who won 6, 12 and 17.

Earlier, the English pair had performed exceptionally well in disposing of Orlowski/Grofova (Czechoslovakia) and China's Chou Lan-sun and Chang Li both encounters going the distance of five games.

Neale and Karenza disappointed in losing -12, -21, -19 to Sweden's Peter Larsson and Radberg as did Taylor and



China's former world champion Chuang Tse-tung beaten in Halmstad by England's Denis Neale and Stellan Bengtsson of Sweden.

Jill who lost -22, -10, 19, -19 to Kunz and Petra Stephan.

With a succession of 2-straight wins, Sweden's Ingemar Vikström won the junior boys' event, a title last held by Anders Johansson of Sweden, and won in 1954 by England's Eddie Hodson.

Team Championships

MEN

Round 1

CHINA bt Norway 3-0; ENGLAND bt Sweden II 3-2 (C. Barnes bt A. Johansson 18, 14; lost to B. Persson -14, 9, -16. D. Neale lost to Persson -14, 13, -18, bt Johansson 19, 16; Barnes/Neale bt Johansson/Persson -18 15, 22); CZECHOSLOVAKIA bt Netherlands 3-1; KOREA bt Finland 3-0.

HUNGARY w.o. Germany DDR Scr.; YUGOSLAVIA bt Denmark 3-0; FRANCE bt Israel 3-1; SWEDEN bt Poland 3-0.

Quarter-finals:

CHINA bt England 3-2 (Chuang Tse-tung bt Barnes 12, 12; lost to Neale -10, -19. Li Fu-jung bt Neale 20, 15; bt Barnes -19, 18, 18. Chuang Tse-tung /Li Ching-kuang lost to Barnes/Neale -13, -18); HUNGARY bt Yugoslavia 3-0. CZECHOSLOVAKIA bt Korea 3-0; SWEDEN bt France 3-1.

Semi-finals:

HUNGARY bt China 3-2. Klampar lost to Li Fu-jung 19, -18, -17; bt Chou Lan-sun 21, 19. Jonyer lost to Chou Lan-sun -7, -17; bt Li Fu-jung 20, 13. Jonyer/Klampar bt Chuang Tse-tung /Li Ching-kuang 13, -18, 17. SWEDEN bt Czechoslovakia 3-0. Alser bt Turai 7, -18, 14; Bengtsson bt Orlowski 15, 12. Alser/Bengtsson bt Orlowski/Turai -23, 18, 7.

Final:

HUNGARY bt Sweden 3-0. Jonyer bt Alser 13, 9; Klampar bt Bengtsson 14, 15. Jonyer/Klampar bt Alser/Bengtsson 12, -14, 12.

WOMEN

Round 1

GERMANY DDR bt Netherlands 3-0. FRANCE bt Finland 3-0.

Quarter-finals:

KOREA bt France 3-0; HUNGARY bt Sweden 3-0. CZECHOSLOVAKIA bt England 3-0 (A. Grofova bt K. Mathews 19, 19; I. Vostova bt J. Shirley 18, -6, 17; Grofova/Vostova bt Mathews/P. Piddock 11, -20, 21); CHINA bt Germany DDR 3-0.



Three times runner-up to Chuang Tse-tung in world championship events was Li Fu-jung, another of China's strong men back in action in Sweden.

Semi-finals:

KOREA bt Hungary 3-2.
Ailesa Lee bt B. Kishazi 11, 19;
bt J. Magos -19, 18, 10.
Joung Sook Choi bt Magos 12, -18, 19;
lost to Kishazi -17, -21.
Ailesa Lee/Joung Sook Chio lost to
Magos/H. Lotaller -15, -18.
CHINA bt Czechoslovakia 3-0.
Lin Hui-ching bt Grofova 17, 15;
Cheng Min-chih bt Vostova 7, 12;
Cheng Min-chih/Lin Hui-ching bt
Grofova/Vostova 10, -14, 17.

Final:

CHINA bt Korea 3-0.
Lin Hui-ching bt Ailesa Lee 10, 17.
Cheng Min-chih bt Joung Sook Choi
19, 10.
Cheng Min-chih/Lin Hui-ching bt
Ailesa Lee/Joung Sook Choi 19, 16.

Individual Events

Men's Singles: Quarter-finals:

H. Alser (Swe) bt M. Karakasevic (Yu)
13, -15, -17, 18, 11;
D. Surbek (Yu) bt T. Klampar (Hr)
19, 11, 14;
I. Jonyer (Hu) bt Chou Lan-sun (Ch)
19, -11, 15, 10;
S. Bengtsson (Swe) bt Chuang Tse-tung
(Ch) -15, 16, -14, 16, 18.

Semi-finals:

ALSER bt Surbek 15, 12, 13;
BENGTSSON bt Jonyer -18, 12, -18, 13,
15.

Final:

ALSER bt Bengtsson -10, 17, -16, 20,
14.

Women's Singles: Quarter-finals:

I. Vostova (Cz) bt Li Heh-nan (Ch)
12, 12, 19;
Cheng Min-chih (Ch) bt Cheng Huai-
ying (Ch) 9, 7, 15;
Lin Hui-ching (Ch) bt D. Calinska (Po)
16, 5, 11;
Li Li (Ch) bt J. Magos (Hu) 16, -16,
11, 17.

Semi-finals:

CHENG MIN-CHIH bt Vostova 17,
-17, 11, 11;
LIN HUI-CHING bt Li Li 12, 12, 12.

Final:

CHENG MIN-CHIH bt Lin Hui-ching
17, -16, 18, 15.

Men's Doubles: Quarter-finals:

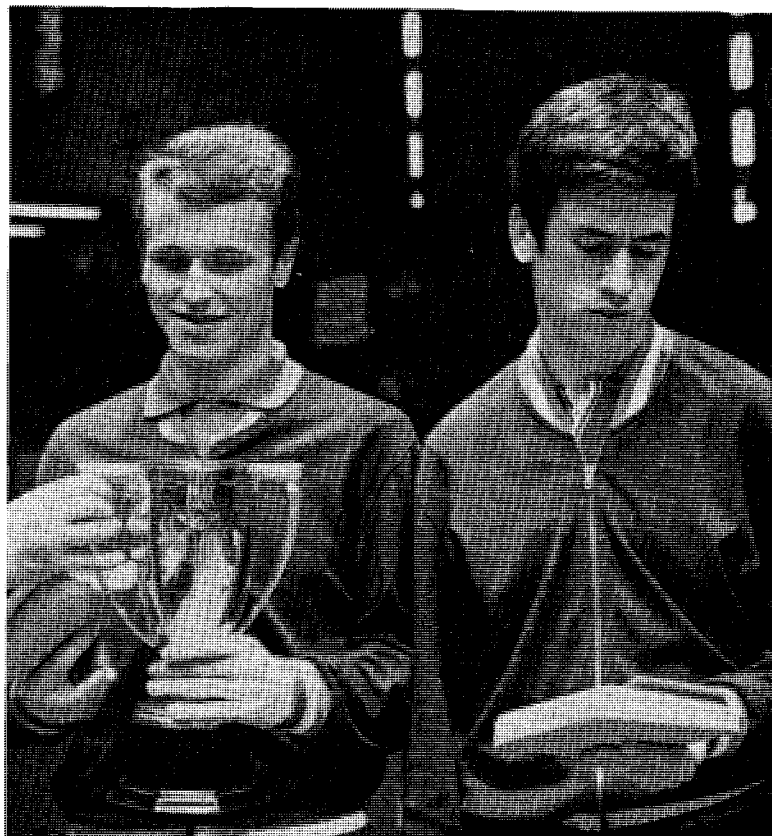
Chang Hsieh-lin/Wang Wen-hua (Ch)
bt A. Johansson/M. Svensson (Swe)
15, 14, 11;
Chou Lan-sun/Yu Chang-chun (Ch) bt
A. Stipanovic (Yu)/Surbek -7, 16, -11,
17, 20;
Li Fu-jung/Chih En-ting (Ch) bt M.
Orlowski/J. Turai (Cz) 10, 16, 15;
Chuang Tse-tung/Li Chiang-kuang
(Ch) bt R. Andersson/B. Neidert
(Swe) 14, 7, 15.

Semi-finals:

CHOU LAN-SUN/YU CHANG-CHUN
bt Chang Hsieh-lin/Wang Wen-hua
19, 15, 12;
CHUANG TSE-TUNG/LI CHIANG-
KUANG bt Li Fu-jung/Chih En-ting
15, 19, -23, 14.

Final:

CHOU LAN-SUN/YU CHANG-CHUN
bt Chuang Tse-tung/Li Chiang-
kuang 20, -19, 18, 15.



Hungary's Istvan Jonyer and Tibor Klampar—winners of the Men's Team event.

Women's Doubles: Quarter-finals:

Li Li/Liang Li-chen (Ch) bt Joung
Sook Choi-Hyun Sook Chung (Ko)
18, 16, 16;
Cheng Huai-ying/Chang Li (Ch) bt
M. Neidert/B. Radberg (Swe) -19,
-11, 20, 16, 15.
B. Kishazi (Hu)/J. Shirley (Eng) bt D.
Hovestadt/P. Spethan (DDR)
16, 12, -9, 8;
Lin Hui-ching/Cheng Min-chih bt
In Ock Kim/Ailesa Lee (Ko) 11, -17,
18, 11.

Semi-finals:

LI LI/LIANG LI-CHEN bt Cheng
Huai-ying/Chang Li-chen 19, 18, 15;
LIN HUI-CHING/CHENG
MIN-CHIH bt Kishazi/Shirley -18,
17, 13, -14, 18.

Final:

LI LI/LIANG LI-CHEN bt Lin Hui-
ching/Cheng Min-Chih 16, -19, 17,
21.

Mixed Doubles: Quarter-finals:

J. Secretin/M. Rioual (Fr) bt S.
Bengtsson/L. Andersson (Swe) 13,
-12, 12, -19, 15.
Chuang Tse-tung/Liang Li-chen bt
C. Barnes/P. Piddock (Eng) 6, 12, 17.
Chang Hsieh-lin/Lin Hui-ching bt
Wang Wen-hua/Cheng Huai-ying
17, 18, 19.
Turai/Vostova bt Li Ching-kuang/Li
Ho-nan (Ch) -10, 15, 13, 15.

Semi-finals:

CHUANG TSE-TUNG/LIANG LI-
CHEN bt Secretin/Rioual 13, 17, 17;
CHANG HSIEH-LIN/LIN HUI-
CHING bt Turai/Vostova 17, 16, 4.

Final:

CHUANG TSE-TUNG/LIANG
LI-CHEN bt Chang Hsieh-lin/Lin
Hui-ching 15, 15, 15.

CZECHS FOR TEESSIDE

PRIOR to playing in the English Open at Brighton, the Czechoslovakian national side will engage in the Teesside 3-Star Open at Thornaby Pavilion over the weekend Feb. 20/21.

Details of the tournament which boasts a Cash Prize Fund of £200 can be had from the Organiser, Alan Ransome, 21a, Church Lane, Ormesby, Teesside (Phone 0642-34214). Entries close on Wednesday, January 27 the full complement of events being M.S., W.S., M.D., W.D., X.D., V.S., Y.S. (U-18) and an international team competition which will be by invitation. This latter tourney will be limited to 16 Teams.

Teams will comprise two men and one woman playing four men's singles and one women's singles on a knock out basis. The draw will take place at Ormesby Table Tennis Club on Saturday, January 30 at 10-30 a.m.

TABLE TENNIS

TROPHIES

USE THE SPECIALISTS

Widest selection and quickest first-class engraving service, by mail, telephone, or showroom. Send for FREE COLOUR CATALOGUE. Also TIES, BADGES, MEDALS, etc. to any design. Alec Brook Ltd., 01-387 3772/3/4 124 Euston Rd., London, N.W.1.

Jack Carrington
Progressive
Table Tennis

TABLE TENNIS NEWS: 'When the word "coaching" is mentioned, many people instinctively think of Jack Carrington . . . Photographs, illustrations, coaching tips—the lot—all in one book . . . good reading. As a coaching manual, it is invaluable !

From bookshops or direct from the E.T.T.A.
24s. (postage 1s. extra)
BELL
6 Portugal St. London



HIGHFIELDS SCHOOL

TABLE TENNIS CENTRE

By JOHN PIKE

This week marks the first anniversary of the Highfields School Table Tennis Centre at Wolverhampton. It should be celebrations all round for all those connected with the Centre, for so much progress has been made in such a short time.

Now rated one of the top centres in the country, one has to go back to the mid 1960's to get the full story of this new venture.

Meetings followed meetings between local table tennis officials and the Education Authorities and each time it was the same negative answer.

After years of almost despair the breakthrough came, and when it did, things moved so fast, that the progress made in just 12 months is unbelievable.

Malcolm Scott, and to a lesser extent Albert McIlreath, had played their part at those early meetings, and it was fitting that these two well known Midland officials were present at the

opening ceremony. It was a night they could be proud of.

An added attraction on that January night was an exhibition match between Denis Neale and Chester Barnes. As luck would have it for the 250 youngsters present, the England team were training at nearby Lilleshall.

With the bond now firmly sealed, and by this I mean that table tennis had been accepted by the local Education Authorities, it was the turn of Jim Hayward and his team of coaches to swing into action.

Starting with 6 tables, two sessions a week were arranged on Tuesdays and Thursdays, and the cost of a 10 week course for a youngster was 10/-.

Twelve months later the centre now has 12 tables, 42 holders of the bronze award and 11 silvers to show for their efforts. At least 6 of these are likely to reach the gold standard later this year.

Working close with Jim Hayward is his assistant Bill Russell, and Anne

Durnall, who is responsible for the liaison of other schools in the area. At present, these schools include St. Chad's, Penn, Girls High, Coppice, and St. Peter's, but of course the biggest percentage still comes from Highfields.

With 12 tables now in operation at the centre, it means that 16 coaches and players are involved each week on a rota basis. This then covers the nights when senior players are playing in the Wolverhampton League.

The image of the centre has been improved immensely by the visits of Bryan Merrett. As well as the youngsters, Bryan has also put the teachers through their paces and this cannot be a bad thing.

Looking after the financial side is treasurer Albert McIlreath and he in turn receives useful assistance in this direction from one time Staffordshire champion, Joyce Hayward.

The Wolverhampton Association, of which Albert McIlreath is chairman, is firmly behind this new venture, and it was a welcome £20 from them which helped the centre get off the ground.

A new 10 week course will be starting again this month, but this time, all players will be at least at the bronze standard, for there is no room at this session for beginners.

One unusual feature about these courses, at least as far as Staffordshire is concerned, is that far more girls are attending the centre than boys.

On the question of girls, eight of them, Heather Round, Pat Holmes, Glenys Nicholls, Heather Johnson, Janet Carr, Shani Leo, Janita Wojciechowski, and Virginia Grainger, will be going to Lilleshall this month for a weekend coaching session.

Yes it has all been happening at Highfields in the last 12 months, and to all those connected with the centre in any way, may I raise a glass to you, for a good job well done.

Shrewsbury: that it was completed in one day, although held at three venues, the Liberal Club, the Tele Sports Club and the Belmont Youth Centre, gave the organisers of this tournament a sense of achievement that can hardly be appreciated by officials of other counties who have access to modern factory premises for their tournaments.

At 10-45 p.m. when the last final was finished there were still eighty or so competitors present to thank the organisers and cheer the prize winners at the presentation ceremony.

The Tournament Referee Bill Harris was ably assisted by John Martin (County Chairman), Bert Ricketts (County Secretary), Neville Birch (Secretary, Shrewsbury League) and many others. Winners were:

M.S.: C. Evans bt Mike Jones 13, 8.
W.S.: Miss C. Scott bt Mrs. M. Robinshaw -15, 17, 14.

M.D.: G. Cheetham/Motto Jones bt Evans/P. Hotchkiss 19, 13.

W.D.: Mrs. E. Cavell/Robinshaw bt Miss J. Mellor/Mrs. S. Rogers 17, -14, 16.

X.D.: K. Morris/Mrs. Gee bt Mike Jones/Mrs. C. Clutton 16, 11.

I.S.: K. Walton bt C. Neal 14, 18.

J.S.: I. Woolley bt A. Beauclerk -18, 11, 10.

SUSSEX JUNIOR OPEN

Wrongly given in last month's magazine was the date of the Sussex Open as Saturday, April 3, 1971. The tournament will be condensed into a one day tournament but on SUNDAY, April 4, 1971, the hall at Worthing not being available on the Saturday.

SHROPSHIRE NOTES

by Alan J. Cavell

SHREWSBURY THE HUB

IT is easier to organise table tennis activities in counties with large industrial areas, large centres of population and good communications between cities than in rural counties such as Shropshire.

This county is famed for its beautiful countryside and its picturesque towns. The County town of Shrewsbury, with its black and white buildings, its peaceful riverside walks and the site for the famous annual Flower Show symbolises the tranquillity of gracious country living.

Shrewsbury, in the middle of the county, has, as would be expected, long been the most active table tennis centre; other areas of activity have been in the much smaller county border market towns of Whitchurch, Oswestry and Ludlow, together with the town of Wellington.

Wellington, once in the industrial heart of Britain is now being transformed into the modern city of Telford. The first iron bridge to be made in the world still spans the river Severn at Ironbridge as a testimony to the local skills of a bygone generation.

With this background it is easy to understand why the 1970-71 Shropshire Closed Tournament was held in

Company - Unit - Sport - Social School and Old Boys

HAVE YOU GOT A CLUB TIE?

A minimum of two dozen High Quality terylene ties with or without stripes, printed with your own Club motif in full colour from 12/- each. Also ladies squares in silk or tricot with motif in full colour in opposite corners.

If you haven't a design our Art Department will oblige free of charge.

WADDOCKS & DICK LIMITED

Jandeman House, 13 High Street, Edinburgh EH1 1ST. 031-556-2206. Established 20 years.

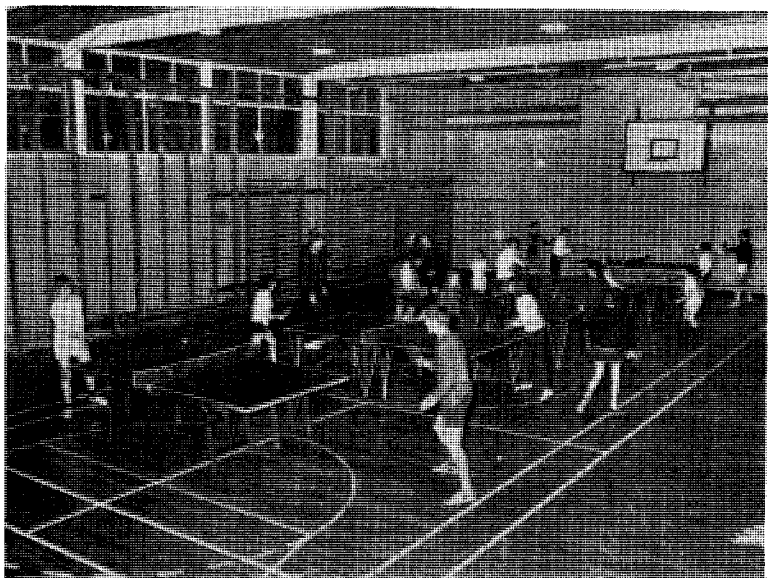
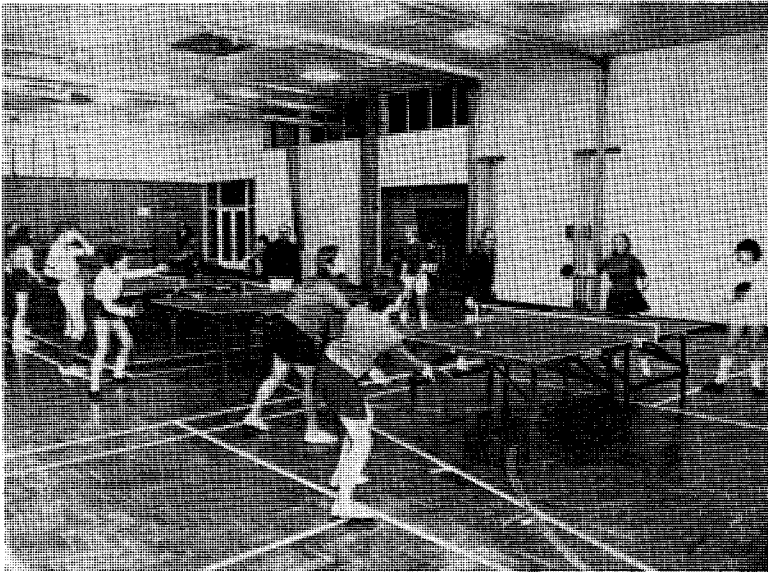
CLUB BADGES

- * Attractive Cloth Badges, made to your own design, in any quantity.
- * Suitable for Blazers, Sweaters, etc.
- * LOW PRICES AND QUICK DELIVERY.
- * Free help offered in designing your badge.

Please write to:

S. A. CORY & COMPANY

35b Tooting Bec Gardens Streatham, S.W. 16.



The twin halls that make up the Highfields Centre at Wolverhampton

NORFOLK NOTES

by J. S. Penny

FULLER'S "EARTH" AT LYNN.

JOHN FULLER, of Yarmouth, on the eve of his fifteenth birthday, became the youngest Norfolk Senior Closed Champion when he beat Phillip Tye, also of Yarmouth, 15 and 15 in the final at King's Lynn Y.M.C.A. on November 28. He also beat Tony Hipperson's youth record which had stood for 15 years. On the way to the final he accounted for Futter and Emerson of Lynn; Spinks, Mitcham, Skedge and Bensley of Norwich. In addition, he took the Mixed with Edna Fletcher of Yarmouth, who also had a good day. Edna, with her Yarmouth partner, Joan Rodwell, won the Women's Doubles for the third year running. She did lose the Women's final and her title to Betty Cassell of King's Lynn, but was awarded the Victor Ludorum for the best overall performance at the Championships. Skedge and Francis of Norwich, the previous winners of the C.E.Y.M.S. tournament, took the Men's Doubles.

Results:

M.S.: J. Fuller (Y) bt P. Tye (Y) 15, 15.

M.D.: D. Skedge/S. Francis (N) bt A. Hipperson/B. Mitcham (N) 17, -19, 13.

W.S.: Mrs. B. Cassell (K.L.) bt Mrs. F. Fletcher (Y) 18, 20.

W.D.: Mrs. Fletcher/Mrs. J. Rodwell (Y) bt Mrs. Cassell/Mrs. N. Ford (K.L.) 8, -10, 18.

X.D.: J. Fuller/Mrs. Fletcher bt Steve Bassett/Mrs. Janet Moore (Wymondham) 18, 14.

V.S.: L. Holdom (N) bt J. Bishop (Fakenham) 16, 18.

The Norfolk Junior, Chris Bensley, won the Dick Moore Cup at Yarmouth's American Tournament. I should have mentioned earlier that, at the Norfolk Closed, he put out the holder, Tony Hipperson. Yet, playing for Norwich 'B' against Dereham in an E. Anglian League Division II match, he found the opposition of seasoned league players rather too much at his present stage of development. Norwich 'B' are concentrating on Youth and hope this will result in a strong 'A' Team in a season or two's time.

Norfolk had an encouraging 6-4 win over Northamptonshire at Dereham Youth Centre. This was the first senior county match to be played at that venue.

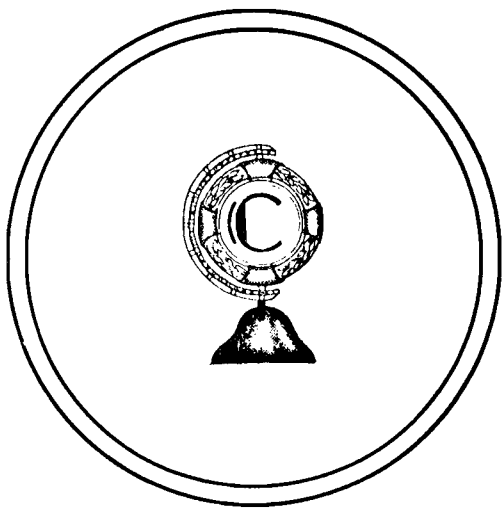
Norwich league are reverting to Sunday Championships. This season they will be held at the Lads' Club for the first time. The date is February 21.

TOURNAMENT DIARY

Date	Title and venue	Additional to normal events	Organising Secretary
Jan. 23/24	Essex 2-Star Open Harlow Sports Centre Hammarskjold Road, Harlow, Essex.	IS (M) IS (W) VS	A. W. Dale, 9 Paternoster Close, Waltham Abbey, Essex.
30/31	Kent 2-Star Open Marine Pavilion, Folkestone, Kent.	YS (B) YS (G) VS	K. Gregory, 'Manna', Hillview Road, Whitstable, Kent.
30/31	Burford Junior Open The Grammar School, Burford, Oxfordshire.	U-15, BS, GS, BD, GD, U-13, BS, GS, BD, GD	M. J. Chalk, Old Grammar School, High Street, Burford, Oxon.
31	North Bournemouth Restricted 1-Star Open, Winton YMCA, Jameson Road, Winton, Bournemouth, Hants.	JS	C. B. Cashell, 16 Victoria Avenue, Winton, Bournemouth. Closing Date: 25.1.71.
Feb. 6	Birmingham 2-Star Open, Harry Mitchell Rec. Centre Broomfield, Warley, Worcs.	JBS, JGS JD, VS	M. Goldstein, 415 Moseley Road, Birmingham, 12.
13	South Yorkshire 2-Star Open Recreation Hall, Middlewood Hospital, Middlewood Rd., Sheffield.	YS, GS	K. Robinson, 62 Twentywell Road, Sheffield, S17 4PW. Closing Date: 30.1.71.
14	Luton Restricted 1-Star Open, Vauxhall Motors Canteen, Luton, Beds.	JBS, JGS	J. E. Short, 59 Marston Gardens, Luton, Beds.
20/21	TEESSIDE 3-STAR OPEN, Eston Sports Centre Eston, Teesside	YS, VS International Team Event.	A. Ransome, 21a Church Lane, Ormesby, Middlesbrough, Teesside.
25/27	44th ENGLISH OPEN, The Dome and Corn Exchange, Brighton Sussex	VS International Team Events.	D. R. Tremayne, E.T.T.A., 26/29 Park Crescent, London, W1N 4HA. Closing Date: 1.2.71.
28	Fenland 2-Star Open, Corn Exchange, (Note: No W.D.) Tuesday Market Place, King's Lynn, Norfolk.	JBS, JGS	R. D. Archer, 'Clinton', Salts Road, West Walton, Wisbech, PE14 7EJ. Closing Date: 1.2.71.
Mar. 6	Northumberland 2-Star Open, No. 1 Canteen, Dept. of Health and Social Security, Benton Park Rd., Newcastle-on-Tyne.	JBS, JGS, VS	T. A. Morpeth, 59 Preston Avenue, North Shields, Northumberland.
14	Lancashire Junior Open, Institute of Technology, Deane Road, Bolton, Lancs.	U-15, BS, GS, U-13, BS, GS (Note: No XD)	G. Campbell, 1 Winslow Road, Hunger Hill, Bolton, BL3 4SR. Closing Date: 27.2.71.
Note: Closing dates approximately 14 days prior to event.			
IRELAND			
Jan. 23	Co. Kildare Open (Naas)		Entry Form from: C. A. Moore, 78 Orby Drive, Belfast, BT5 6AG.
29/30	Co. Antrim Open (Ballymena)		
Feb. 4/6	Leinster Open (Dublin)		
13/14	Co. Wexford Open (Wexford)		
26/27	North of Ireland Open (Londonderry)		
SCOTLAND			
Jan. 23	West of Scotland Open (Glasgow)		J. Weatherstone, 57 Kirkland Street, Glasgow, N.W.
Feb. 14	North Lanarkshire Open		G. Moir, 69 Catherine Street, Motherwell, Lanarks.
28	Central Open		T. Crosbie, 74 Roadside, Kildrum, Cumbernauld.
WALES			
Mar. 6/7	WELSH OPEN, Afan Lido, Aberavon.		Mrs. N. Roy Evans, 198 Cyncoed Road, Cardiff, CF2 6BQ.

TROPHIES

Consult Specialists —



F. CORDELL & SONS (Trophies) Ltd

21 KINGLY STREET (OXFORD CIRCUS)

LONDON, W.1.

Telephone: 01-437 8893-1921; 01-554 7356 (evenings).

Courteous — Prompt Service

HONOURS EVEN WITH SWEDEN

by Albert W. Shipley

The first of two friendly international matches against Sweden took place in front of the B.B.C. Television cameras at the Pier Pavilion, Felixstowe, Suffolk on Thursday, Dec. 17, 1970.

Unfortunately, a slippery floor prevented both teams from giving an uninhibited display and the match failed to live up to its expectations of exciting play.

Denis Neale got England off to a good start with a win over Bo Persson but this was quickly countered by a Stellan Bengtsson victory over Chester Barnes.

Jill Shirley found the combination of Lena Andersson's drop-shot tactics and the conditions underfoot too much to combat and went down rather easily in straight games.

The loss of both doubles by the England pairs ensured a match victory for Sweden and this disappointing match ended with another Bengtsson victory, this time over Neale, followed by an easy Barnes win over Persson.

Scores:—
Neale bt Persson 24, 18.
Barnes lost to Bengtsson -10, -21.
Shirley lost to Andersson -11, -15.
Barnes/Neale lost to Bengtsson/
Persson -21, 18, -14.
Neale/Mathews lost to Bengtsson/
Andersson -16, -16.
Neale lost to Bengtsson -19, -13.
Barnes bt Persson 12, 12.

ENGLAND 2 SWEDEN 5

In contrast, the following evening at the 'Y' Sports Centre, Maidstone, Kent provided a good crowd with the opportunity to applaud some England successes.

Once again Neale opened the account with a comfortable win over Karl-Johan Bernhardt who replaced Kjell Johannson on this tour, the former European Champion having back trouble.

Then followed the key match, in which Trevor Taylor brought off one of his best ever wins by beating a surprised Bengtsson.

Trevor's keen anticipation in block-returning most of Bengtsson's best hits, together with some devastating forehands of his own, completely demoralised the European Youth Champion, a demoralisation that was to last most of the evening.

Pauline Piddock started off in fine style against Lena Andersson winning the first with her special brand of flat forehand hits. However, the consistency of Miss Andersson won through in the end, surviving an incident at 10-8 in the third when the umpire rightly penalised her for shielding the ball in service, having been warned earlier in the game.

In a reversal of the happenings at Felixstowe, our combinations won both doubles to give a match-winning score of 4-1. Neale then faced Bengtsson in an attempt to emulate Taylor and to gain revenge for the previous evening's defeat. Although both games were closely contested, Neale ran out the winner against a player who had had the edge taken off his game by the Taylor defeat.

The final match was an absorbing contest, for after trying to match hits with Taylor, Bernhardt adopted pure defensive tactics, in Ebby Schöler style, forcing Trevor to keep up a top-spin, loop and roll offensive. The Swede's defence proved just that bit steadier and so gave a match result the exact reverse of Felixstowe.

Neale bt Bernhardt 15, 15.
Taylor bt Bengtsson 15, 15.
Piddock lost to Andersson 21, -12, -15.
Neale/Taylor bt Persson/Bengtsson

-20, 17, 16.
Neale/Piddock bt Bengtsson/Andersson 17, 18.
Neale bt Bengtsson 20, 19.
Taylor lost to Bernhardt 16, -19, -17.
ENGLAND 5 SWEDEN 2

ESSEX NOTES

by Harry Walker

THRILLING WIN BY ANDREWS

THE SOUTHEND OPEN stole the lime-light last month and the Southend League are to be congratulated on a well organised tournament, which was their most successful effort. Mike Watts and Harry Spraggs must have had a worrying time, with a threatened power cut, but fortunately this did not materialise. Chester Barnes took three titles, Lesley Radford won the women's singles and Ian Horsham triumphed against England No. 1 Junior Nicky Jarvis Altogether a good weekend for Essex.

In the County Championships all our teams are unbeaten and the first team now head the table with five wins.

The Junior 2nd team had a most exciting time at Cambridge when they came away with a 5-all draw. Alan Shepherd was really thrilled with the performance of a boy from Colchester named John Andrews. He was a last minute substitute for Graham Bassett, who got mixed up with the dates. Essex were trailing 4-5 in the final event and John had to play John Willis who last season beat Ian Horsham. "Our" John won possibly the set of his young life 17, -15, 19 and so the Junior East team survived and retain their record of being unbeaten since—to quote Alan "goodness knows when". The Premier Junior team could only draw with Lancashire at Canning Town and this unexpected set-back has rather spoilt our chances of winning this new division for the first time.

Two under-14 friendly matches have been arranged—one against Kent at St. Andrew's Hospital, Billericay on Jan. 16 and the other was against a Yorkshire team on Jan. 2 on the way to the Yorkshire Junior Open.

Alan is arranging another coach for the Lancashire Junior Open, at Bolton on March 14 and any interested juniors should contact him as soon as possible. Entry Forms can be provided (but not the money)!

A new Junior Ranking list has been issued with effect from Dec. 12. In the BOYS, Ian Horsham moves up to No. 1 and Robert Hellaby to No. 2. Martin Bawden swaps his No. 8 place with S. Hughes who was No. 6. P. Hunt and J. Andrews come in at 9 and 10 from Group "A". In the GIRLS, just a few positional changes. Gillian Locke moves up to No. 3, changing places with E. Tarten, and S. Read goes down to No. 6 and is replaced at No. 5 by G. Taylor.

Arrangements are going according to plan for the ESSEX OPEN at Harlow Sports Centre on January 23/24. This Tournament is being sponsored by GNOMIST INTERNATIONAL for £125. Help in umpiring and stewarding will be appreciated. Contact Syd Beard and Ian Whiteside.

The Essex Closed—Junior and Senior will be held at Harlow Sports Centre—the Junior on Sunday, May 16 and the Senior on Sunday, May 9. Sponsorship to the extent of £100 has been promised by David Iszatt.

At the last meeting of the County Executive, it was decided to hold a Dinner and Social evening at the County Hotel, Chelmsford to which invitations will be sent to all members of the Executive, Life members and Vice-Presidents, and players of the senior teams. Details and cost etc., will be notified by Mike Watts.

For reasons beyond anyone's control, it has not been possible to issue the usual monthly NEWS SHEET and, in consequence, vital information is not getting through to the leagues and clubs. I understand, that at the last County meeting, Derek Thomas of the Silvertown League volunteered to produce a limited number of copies, at a nominal cost, if someone could be found to produce the necessary edited copy. Now, here is a useful and interesting job, and offers of help are awaited by Mike Watts.

In the meanwhile both the ESSEX CHRONICLE and the ESSEX WEEKLY NEWS, published on Fridays, are affording as much space as possible from material supplied by Geoff Newman of the Chelmsford League.

Congratulations to Mr. and Mrs. Roy Hayes on the birth of a son, Neil. Roy was, at one time, Secretary of the East London League and County Secretary.

I forgot to mention in my last month's notes how well organised the Essex Schools' Championships were and great credit is due to the teachers responsible.

Reference to Robert Hellaby's suspension has been purposely omitted but in view of the fact that an appeal has been made herewith the brief details.

On Oct. 15, Robert Hellaby was suspended by the County from all representative play at League and County level for the rest of this playing season and it was recommended that the suspension be made national. The suspension related to his alleged misconduct at the junior trials.

An appeal has been made on Hellaby's behalf which means, in effect, that the suspension is not affective whilst the appeal is pending. I thought it wise to state these facts for the benefit of those who may be concerned.

TABLE TENNIS... WITHOUT A BAT?

That's how it feels when you're using one of

THE NEW JOHNNY LEACH MODELS

*PATENT PENDING
No. 42549/70



They now become an extension of the hand: lightweight, perfectly balanced; complies with ETTA & ITTF laws: a revolutionary design*, the only bat that carries a written guarantee against breakage and all defects. Each bat is presented in a modern pack designed to protect playing surface. Available now from your sports retailer.

Made EXCLUSIVELY by S W Hancock · Clapham · London · England.

FOR SALE

CLOTH CLUB BADGES made to your own design in any quantity. Low prices - Quick delivery—

S. A. CORY & COMPANY, 35b Tooting Bec Gardens, Streatham, S.W.16.

WESTERN LEAGUE NOTES

by Grove Motlow

NEWBURY THE PACE SETTERS

THANKS to a maximum by Tony Wolf, Swindon pulled off a surprise 7-2 away win over Bristol. Newbury, current league leaders, had a good home win over Newport by 6-3 with A. Reeves in convincing form for the Berks team.

At Weymouth, Plymouth won 8-1 with trebles from Bob Parkins and D. James but despite a maximum from J. Hartry, Weston went down 3-6 to West Wilts.

West Wilts had a good away win at Exeter when in a 5-4 success R. Arney won all his three sets inflicting a rare defeat on Mike Rattue.

Swindon went under 3-6 at home to Newport whose Tony Huish was in invincible form. And, also at home, Weymouth lost by a similar score to Swindon whose star was Tony Wolf again, although C. Diffey played well to beat F. Bailey.

Exeter were well on top in their home match against Weymouth and ran out 9-0 winners whilst, thanks to Tony Watkins' treble, Newport beat Bristol 7-2.

In the Women's section, Devizes beat Weymouth 6-3 with Helen Rusby seeming to improve with every match. Mrs. Vass was the star of the match however winning all her three.

Bristol brought off a good 6-3 win

at Swindon with maximums recorded by Pat Rowe and Mrs. M. Jones. Away to Newport, Devizes won 5-4 when Miss Boyce was unbeaten and Newport's No. 1 Barbara Roden also lost to Helen Rusby.

Weymouth lost 3-6 at home to Bristol and once again, for the losers, Mrs. Vass secured all her three sets. Miss M. Jones did well to take the second game, 21-9, against Mrs. Vass.

But, at home to Swindon, yet another 3-star performance by Mrs. Vass was augmented by two wins by R. Simes whilst D. Ingram recorded her first win when she beat Mrs. Leslie in a 6-3 Weymouth victory.

Thanks to a very good possible by Kath Waters, Devizes had a comfortable 7-2 win at the expense of Bristol who beat Newport by a similar score.

In this latter encounter, Bristol were without Pat Rowe and M. Jones but Susan Harding, aged 13, gave a very sound display and beat Lynette Hobbs, maximums being recorded by Joan Collier and June Watts.

Leading positions:—

MEN	P	W	L	F	A	Pts.
Newbury	4	4	0	24	12	8
Newport	6	4	2	32	22	8
Swindon	4	3	1	22	14	6

WOMEN	P	W	L	F	A	Pts.
Devizes	6	5	1	32	22	10
Exeter	4	4	0	26	10	8
Bristol	5	3	2	23	22	6

'TOP TEN' TOURNAMENT

SHOCKS AROUND AT BARNET

Played at the Barnet Centre on Saturday, Dec. 12, the first of this season's re-instituted "Top Ten" tournaments had nine men and seven women in attendance and many were the shocks that resulted, especially in the women's section.

Denis Neale was the men's winner with a well-nigh spotless record, his one game dropped in seven sets being to his Ormesby clubmate, England's top junior Nicky Jarvis whose one victory was accomplished at the expense of "Les" Haslam 24, 18.

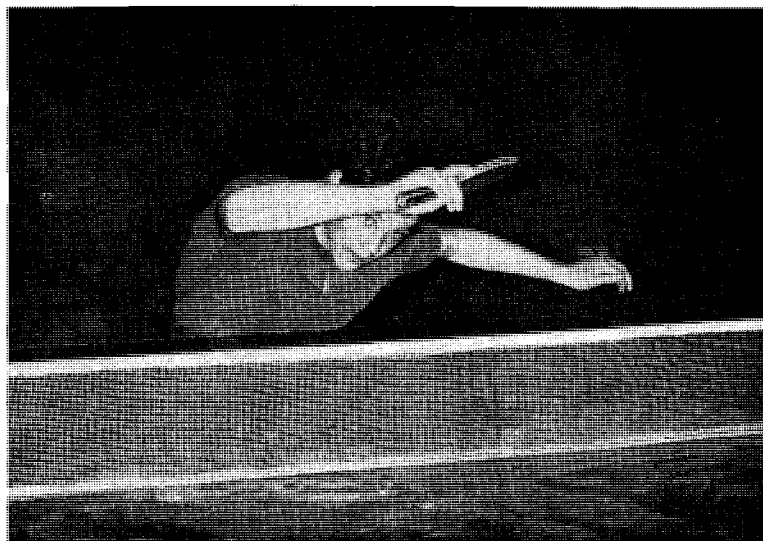
In accordance with the national rankings, Trevor Taylor finished second—Barnes being a non-concluder—but next in line was Brian Burn who finished up with 5 wins and 2 losses including a 2-straight win over Alan Hydes who finished fourth. Barnes played three sets beating Hydes and Haslam, but losing 11, -12, -11 to Ron Penfold.

Pauline Piddock came out top in the women's section her one reverse, in six sets, being to Lesley Radford who finished second, on games average, losing only to Jill Shirley.

Top-ranking Miss Shirley, as well as losing to Mrs. Piddock, also bowed the knee to Karenza Mathews and Judy Williams to finish no higher than fifth!

RESULTS:

MEN:	Barnes	Neale	Taylor	Hydes	Johns	Penfold	Haslam	Burn	Jarvis
Barnes	x	x	x	2-0	—	1-2	2-1	x	x
Neale	x	x	2-0	2-0	2-0	2-0	2-0	2-0	2-1
Taylor	x	0-2	x	2-0	2-1	2-1	2-1	2-1	2-0
Hydes	0-2	0-2	0-2	x	2-0	2-0	2-0	0-2	2-0
Johns	x	0-2	1-2	0-2	x	2-1	1-2	0-2	2-0
Penfold	2-1	0-2	1-2	0-2	1-2	x	2-1	0-2	2-1
Haslam	1-2	0-2	1-2	0-2	2-1	1-2	x	1-2	0-2
Burn	x	0-2	1-2	2-0	2-0	2-0	2-1	x	2-0
Jarvis	x	1-2	0-2	0-2	0-2	1-2	2-0	0-2	x



NICKY JARVIS

England's No. 1 Boy, Nicky Jarvis of Yorkshire—the only player to take a game off Denis Neale at Barnet.

Photo' by Cliff Darley.

WOMEN:

	Shirley	Mathews	Piddock	Williams	Hession	Radford	Howard
Shirley	x	0-2	0-2	1-2	2-0	2-1	2-1
Mathews	2-0	x	1-2	2-0	2-1	0-2	2-0
Piddock	2-0	2-1	x	2-0	2-0	1-2	2-0
Williams	2-1	0-2	0-2	x	2-0	1-2	2-0
Hession	0-2	1-2	0-2	0-2	x	0-2	2-1
Radford	1-2	2-0	2-1	2-1	2-0	x	2-0
Howard	1-2	0-2	0-2	0-2	1-2	0-2	x

POSITIONS

(Current ranking in brackets)

	P	W	L	F	A	Pos
D. Neale	(2)	7	7	0	14	1
T. Taylor	(3)	7	6	1	12	6
B. Burn	(9)	7	5	2	11	5
A. Hydes	(4)	8	4	4	9	8
R. Penfold	(7)	8	3	5	8	13
M. Johns	(6)	7	2	5	6	11
L. Haslam	(8)	8	1	7	6	15
N. Jarvis	(11)	7	1	6	4	12
C. Barnes	(1)	3	2	1	5	3

POSITIONS:

(Current ranking in brackets)

	P	W	L	F	A	Pos
P. Piddock	(3)	6	5	1	11	3
L. Radford	(6)	6	5	1	11	4
K. Mathews	(2)	6	4	2	9	5
J. Williams	(4)	6	3	3	7	7
J. Shirley	(1)	6	3	3	7	8
S. Hession	(5)	6	1	5	3	11
S. Howard	(7)	6	0	6	2	12

"CHESTER BARNES" - "DUNLOP"

*

"HALEX" - "LOUIS HOFFMAN"

*

"JAQUES" - "STIGA" - "SPALDING"

*

"SCHILDKROT" - "TIGER"

*

PLUS LARGE SELECTION OF TRACK SUITS.

Send for Catalogue to:—

CLUB ROW SPORTS (T.T.)

6 CHESHIRE STREET
LONDON E2.

Open Sunday Mornings 8-30—1 p.m.

Also at...

2 DARTMOUTH ROAD
LONDON S.E.23.

Coaching Programme

by Brian Merrett

January—February 1971

JANUARY	
9th	Winchester.
10th	Midlands Coaching Committee Meeting (London).
12th—14th	Course for Bucks. Schools (Crystal Palace).
15th—17th	Birmingham Coaching Course.
19th—21st	Berks. Schools Course (Crystal Palace).
22nd	International Match (Cambridge).
24th	Reading (Coaching).
25th	Leicester (Coaching).
30th—31st	Czech Open (Provisional).
FEBRUARY	
1st & 2nd	Czech Open (Provisional).
6th	Worle Schools Centre.
7th	Senior Top Ten (Provisional).
9th	Nuneaton (Coaching).
11th	European League Match (Guildford).
12th—14th	Lilleshall Course (Birmingham).
15th—17th	Junior Training Camp (Crystal Palace).
21st	Southampton (Coaching).
23rd	International Match (Bracknell).
24th—27th	English Open (Brighton).

Nissen Invitation

by Geo. R. Yates

"CROWN HEADS" LOPPED

£275 was the prize money put up by Nissen International (Sports Equipment) Ltd. at Loughborough on Dec. 11 when, in the University's palatial Sir Edward Herbert Building, the second Nissen Invitation Tournament was admirably conducted by Referee Tony Chatwin.

It proved a triumph for two players "in waiting" for both the nationally ranked No. 2's, Denis Neale and Karenza Mathews, proved comfortable winners over the "crown heads of state" Chester Barnes and Jill Shirley.

Neale was particularly sharp, only Malcolm Sugden posing any sort of threat to a cutting edge that was well nigh stainless and which netted him a cheque for £100.

According to M.C. Albert Shipley, the canny Scot "still had £99 left of his last year's winnings" and he proceeded to put up a bonny fight to add £25 to it at the expense of Alan Hydes in the closest contested set of the evening.

Barnes made heavy weather of his opening duel with Ron Penfold, the Surrey man looking far more the No. 1 in the opening game.

In the final, despite competition from an "organ recital" in the adjoining hall, Neale was the player to pull out all the stops on the Nissen Tuck-away table.

It was a situation that had previously confronted Jill Shirley in the women's final for she too, like Barnes, never really got to grips with her adversary.

RESULTS:—

MEN

Round 1:

C. Barnes (Essex) bt R. Penfold (Surrey) -19, 12, 15;
T. Taylor (Essex) bt A. Piddock (Kent) 13, 15;
D. Neale (Yorks.) bt M. Johns (Ches.) 14, 15;
M. Sugden (Scotland) bt A. Hydes (Yorks.) -13, 19, 18.

Semi-finals:

BARNES bt Taylor 18, -16, 12;
NEALE bt Sugden 13, 20.

Final:

NEALE bt Barnes 14, 12.

WOMEN

Round 1:

J. Shirley (Bucks.) bt P. Piddock (Kent) 17, 19;
K. Mathews (Middx.) bt J. Williams (Sussex) 16, 9.

Final:

MATHEWS bt Shirley 18, 16.

English Schools T. T. A

By DAVID LOMAS

ENTRIES are now in from thirty counties for the Fifth National School-Team Championships which progress a stage further in January and February with the completion of nine area tournaments.

The grand total of teams involved in the seven events (for teams of four players from the same school) is likely to top the thousand mark.

ESSEX COUNTY'S competition involved 81 teams—and with better support from Harlow, Thurrock and S.E. Essex, could have been much more. Even so they have the highest total closely followed by MIDDLESEX (78) and SURREY (71). SURREY'S sophisticated competition started way back in September with matches played mid-week with a "Consolation" event too!

At the other end of the scale BUCKS., OXON and NORTHUMBERLAND'S entries are from solitary schools.

Schools from CUMBERLAND and NORTHUMBERLAND will rectify last year's 'nil' entry but there is no representation from NORTHANTS and WILTSHIRE.

Eight counties are still not involved. CORNWALL plead a special case but surely the game of table tennis is known to schoolchildren in the counties of DORSET, HEREFORDSHIRE, HUNTS., NOTTS., LEICESTERSHIRE and RUTLAND, and SHROPSHIRE . . . or is it unknown to the teachers?

AREA FINALS are scheduled as follows (counties involved in brackets):—

Sun. Jan. 10—Monks' Dyke High School, Louth. (Lincolnshire and Yorkshire).

Sun. Jan. 10—Kennet School, That-cham, Newbury. (Berkshire, Buckinghamshire, Hampshire and Oxfordshire).

Sat. Jan. 23—Hartshill High School, Nuneaton. (Gloucestershire, Warwickshire and Worcestershire).

Sat. Jan. 23—Silver Jubilee School, Bury St. Edmunds. (Cambridgeshire, Norfolk and Suffolk).

Sat. Jan. 23—National Recreation Centre, Crystal Palace. (Kent, Middlesex, Surrey and Sussex).

Sun. Jan. 24—Y.M.C.A., Exeter. (Devon and Somerset).

Sat. Feb. 6—Vinovium School, Bishop Auckland. (Cumberland, Durham, Northumberland and Westmorland).

Sun. Feb. 7—Y.M.C.A., Blackburn. (Cheshire, Derbyshire, Lancashire and Staffordshire).

Sun. Feb. 7—Gt. Baddow Comprehensive School, Chelmsford. (Bedfordshire, Essex County, Essex Metropolitan and Hertfordshire).

HERTFORDSHIRE NOTES

by R. Bridges

NO EXCEPTION

JUNIOR coaching is much on the minds of most Counties at the moment, and Hertfordshire is no exception. Well attended coaching sessions have already taken place, and further sessions will take place during January at Bowes Lyon House, Stevenage.

Junior trials held recently produced the following ranking list:

BOYS—

1. Michael Harper
2. Richard Morris
3. Martin Harris
4. Marcus Baines
5. Steven Jordan
6. David Sherborne
7. Paul Roseberry
8. Martin Corrie

GIRLS—

1. Jane Hartwell
2. Sandra Harding
3. Karen Morton
4. Lena Williams
5. Susan Hartwell
6. Christine Hart
7. Diana Roseberry
8. Sheila Harper

The Inter-Club Knock Out Competition has shown a slight increase in overall entry. Three sections are organised by the County. Open Section recorded 28 teams, the Intermediate 15 and Ladies 7.

CRASH VICTIMS

MARRING the English Closed Championships at the University of Kent, Canterbury was a road accident involving Miss Shelagh Hession of Essex and Sussex county players Roger Chandler and Peter Williams.

Miss Hession, the driver, suffered a broken jaw and lacerations of the face and is detained in Kent and Canterbury Hospital (Northbourne Ward). Roger sustained a broken wrist on his racket arm and needed twenty stitches in a knee wound but Peter, in the rear seat, escaped with minor cuts and shock. Neither he, nor Roger, were detained.

The accident occurred on the outskirts of Canterbury, the head-on collision involving a continental vehicle travelling from Dover.

MIKE JOHNS Table Tennis Range from your sports retailer

INCLUDING
THE ALL-PURPOSE
ATHLETIC SHOE

specially designed
and recommended
by

Cheshire International
MIKE JOHNS

T.T. Shirts, 30/- & 35/- - Shorts 47/6 - Track Suit 105/-
Shoes 29/11 - Socks 12/6 - Ladies skirt & pants 45/6

Schildkrot—THE ball for you

Manufactured in co-operation with

RICHARD E. NORTH & CO. LTD.
Hyde, Cheshire. 'Phone 061-368-2245

Midland League

By PHILIP REID

CHESTERFIELD COME A CROPPER

WITH the half-way stage approaching positions are still being fought for eagerly. In the Men's First division, Chesterfield came an unexpected cropper when Coventry beat them 6-4. Not only was this the crooked spire town's first defeat—it was Coventry's first victory! Phil Richardson recorded a splendid maximum with Alan Bury—still a force to be reckoned with—taking two. It was, in fact, rather a bad month for Chesterfield for their weakened second team (in Division 3) also came unstuck, losing 8-2 to Oxford. This has opened the way for Bristol whose

9-1 win against Walsall 'B' has made them formidable challengers. J. Wise has yet to taste defeat this season and had he have been available for their opening match of the season there is little doubt they would have been sitting pretty now.

In the Intermediate Division, only one player has emerged unbeaten from nine sets—step forward and take a bow Dennis Collins (Nottingham). Other players who are undefeated from six sets are Phil Giles (Birmingham), P. Muir (Nottingham) and Colin Davies (Walsall).

Late starters but quickly into the championship race for the Juniors first division are Wolverhampton, Keith Fellows and Stephen Dunning have plenty of experience and with Mick Mallin also showing useful form,

this side is good enough to cause a few upsets.

Malcolm Carrington, the Loughborough secretary, tells me to watch 13-year-old Malcolm Green of Cheltenham who he says looks an excellent prospect. With five sets out of nine to his credit he could well be right. What a battle the Derby-Loughborough match promises to be in the division! The teams have identical records (25 sets against 5) and both have a 100% player—Ivor Warner (Derby) and Clive Stretton (Loughborough).

Cheltenham brought off their first win of the season in the Veterans 1st Division when they took seven sets from West Bromwich, now the only team in the division without a point. P. Slack recorded a maximum for

Cheltenham with secretary D. Preston collecting two for the losers. Only one 100% man in this division—Johnny Burraston (Nottingham).

With only one of their regular team, Coventry were hard-pushed to hold Worcester 'B' to a draw in the Veterans 2nd Division. It needed a maximum from A. Self to give them a point. Not so Oxford, who beat the same Worcester 'B' team 10-0. Maximums from Walter Reeves and J. Conroy gave Derby their first win of the season—against luckless Nuneaton, with D. Salmon also chipping in with two.

Outstanding individual performance in the Women's Division came from Mrs. Stewart (Nuneaton) who beat all the Nottingham team and was also successful in the doubles but her side still lost 6-4! Mrs. Stewart, in fact must be the most improved player in the division—she is in second place in the averages following three consecutive maximums—only West Bromwich's Kath Perry has a better average.

For consistency in speed bounce & hardness

HALEX 3 STAR

it's made from a specially selected grade of material—a material that gives a ball everything in play

**CONSISTENT SPEED
PERFECT BOUNCE
LONGER LIFE**

CHOOSE HALEX 3 STAR

the perfectly round hard ball that will help you play better

Halex

the choice of the champions

HALEX . TABLE TENNIS LTD. . BARNET . HERTS.

KARENZA BEATS GRINBERG

PLAYING a second match in Leningrad, on December 23, England's European League team ran out 5-2 winners over a Soviet trio comprising Sarkis Sarkhojan, Svetlana Grinberg and the local champion, Belichnov.

Although the Russians got off to a 1-0 lead when Sarkhojan easily got the better of Chester Barnes, it was not until the fifth set that they notched their second success in the mixed doubles.

Karenza Mathews, despite losing the middle game to Miss Grinberg -7 came back with a heartening display to win the decider. Individual scores:—

Barnes lost to Sarkhojan -12, -16.

Neale beat Belichnov 10, 17.

Mathews bt Grinberg 16, -7, 15.

Barnes/Neale lost to Belichnov/

Sarkhojan 17, -11, 11.

Barnes/Mathews lost to Sarkhojan/

Grinberg -14, -17.

Neal bt Sarkhojan -18, 14, 12.

Barnes bt Belichnov 16, 15.

JUNIOR PROFICIENCY AWARDS

An opportunity for GOLD BADGE assessment will be available to holders of the SILVER BADGE Award at the Winton Centre, Bournemouth on Saturday afternoon, Jan. 23, 1971. Enquiries should be directed to the Scheme's Organiser, Jack Carrington, 24 Worcester Gardens, Ilford, Essex ('Phone: 01 554 5838).

BADGES & TIES

Badges in fabric, enamel, wire, silk-screen, etc. to any design.

Ties—woven, embroidered, printed. USE THE SPECIALIST—

Write for quotations. Also trophies, cufflinks, car badges, etc.

Ask for FREE COLOUR CATALOGUE. Alec Brook Ltd. 01-387

3772/3/4, 124 Euston Road, London, N.W.1.

CAMBRIDGESHIRE NOTES

by Leslie Constable

SUCCESS ONLY FAIR

TO date Cambs have only achieved fair success in the County Championships having won one, drawn one and lost one match in the Eastern Division. Had victory ensued from their meeting with Norfolk promotion could well have been the prospect.

Victory over Suffolk was well merited, but in losing 4-6 to Herts II, perhaps rather unluckily, the loss of a point to Norfolk could be all important in the final analysis.

Against Herts II, the doubles sets went against Cambs and Dick Clode lost his first Championships set, but it is the doubles which are imperative and vital ones to be won.

Fluctuating fortunes has also been the lot of Cambs Juniors for after beating Herts II 8-2 and being trounced 9-1 by Norfolk they held Essex II to a draw after leading 4-1 and 5-4.

Both Paul Day and Emma Swan are bright prospects and with Paul having a "Robot Server" in his home which cost all of £300 he certainly means business.

Much interest is being aroused for the forthcoming international match between England and Federal Germany to be played in the Cambridge Guildhall on Jan. 24.

Tension has been created in the Cambs League by Cambridge University's defeat of University Press. John Corral inflicted the first defeat of the season on Dick Clode, and Alan Ponder, playing for the 'Varsity, beat Phil Chisnall.

Top places in Div 1 are now occupied by Press, Soham II and Cambridge University with YMCA I struggling at the bottom of the division!

G.O.R.A. and Soham III lead Div. II with the latter having a 100% record. Pointless in this section are Bassingbourn.

Melbourn lead Div. IIIA with Ely B.S.C. Swavesey II are also without a point. Fire Brigade and C.I.B.A. top Div. IIIB and the Saint Club Div. IVA

SOUTH EAST MIDLANDS LEAGUE

In the S.E.M.L., Cambridge City are at the head of the Men's Section and recently defeated Northampton 9-1 bringing them a very good sets average. With John Thurston, Tony Littlechild and Stephen Andrews still in good form they again look like running away with the championship.

N. Herts are playing well and also beat Northampton who were without Lyon. Paul MacArthur of St. Neots had a very good match for St. Neots Juniors who forced a draw with Bedford, Paul being unbeaten. So too was Henry Fox in the Veterans Division. In the women's match, Barbara Webb (daughter of the chairman) won two singles.

In the Women's Section, N. Herts are running away with the title and hammered Northampton 10-0. Ely had a fine away win over Peterborough in the Men's Section winning by a 6-set margin.

Hunts Central had a magnificent win over Peterborough in the Junior Section and these two teams were also involved in a 5-all draw in the Men's Section.



TABLE TENNIS was represented five-strong at the annual dinner and dance of The Sports Writers' Association at the Bloomsbury Centre Hotel, London, on December 7th. Left to right, Sydney Hulls (Daily Express), Ann Woodford, John Woodford, Daisy Leach and Johnny Leach.

YORKSHIRE NOTES

by Cliff Darley

UNIQUE FAMILY DOUBLE

EILEEN STARKIE completed a unique family double when she made her 100th appearance for the Barnsley League at Middlesbrough for the only other player to 'reach a ton' in the history of Barnsley Table Tennis . . . husband, Brian!

Barnsley North End's 15-year-old Graham Philips, a promising player in Div. 6, is currently proving that his sporting talents are not limited to table tennis. He was recently invited for trials with Sheffield United A.F.C. in his capacity as a schoolboy goalkeeper, and now attends Bramhall Lane regularly for training. Alan Porter, watch out!

Outstanding performance of the month in Bradford was achieved by 16-year-old Bob Shutt who clobbered Neil Fulstow, 17 and 16, in a junior Yorkshire League match, Bob is now playing in Div. 1 for YMCA and has already turned out for Bradford's senior 2nd team.

Hermits, without Jim Yeats whose wife, after a three months stay in hospital, has presented him with a son, Neil, left it to "Andy" Holdsworth to face up to the old maestro Maurice Pitts at 4-all in their cup match against Metal Box.

"Andy" rose to the occasion to pull Hermits through, winning 19 and 24. Pam Dawson, married daughter of Yorkshire County secretary, Frank Briggs, reached her first Open final at Workington. In the Cumberland Open, with Cheshire's Janice Green, they were runners-up to Judy Heaps and Lesley Montague in the women's doubles event.

Halifax League secretary, Geoff Winston Barnes, has been appointed to the Yorkshire E.C. as member for the West Riding while the 12-year-old son of former England, and Yorkshire County player, Ron Thompson—Gary—has started his competitive career for YMCA in Div. 7.

Without the services of County star, Lynda Sutton, Hull's women have collected three out of four points so far. Fortunately, for the York-

shire League champions, juniors Janet Rutter and Brenda Zealey have occupied the bottom two places thus far without defeat.

Congratulations to Tony Clayton on reaching the finals of both the Merseyside and Midland Counties 3-Star Opens and also to four Hull schools—Hymers College (Boys' U-19), Amy Johnson's H.S. (Girls' U-19) Malet Lambert H.S. (Girls' U-15) and Thanet Junior H.S. (Girls' U-13)—who, as winners of the recent Yorkshire Schools' Championships will represent the County in the E.S.T.T.A.'s Area 3 championships at Louth, Lincs on Jan. 10. The Yorkshire Closed will be held in Bradford, probably at Grange School, on April 24/71.

WORCESTERSHIRE NOTES

by Ian R. Crickmer

At this customary time for taking stock, a look back at Worcestershire's results for 1970 leads instinctively to a hope for better fortune in the coming year. The old year went out with December defeats for each County Championships team, and, in fact, each side registered only one win during 1970—the last first team victory was twelve months back, versus Hampshire in January, 1970!

The Senior Selection Committee was asked at the Annual General Meeting to place the emphasis on younger players in its second team choice, but the attitude of some of the youngsters under scrutiny must disappoint the selectors. Failure to attend trials and practice sessions, and last minute withdrawal from selected teams, create a poor impression, and make the application of this policy a difficult task. Greater enthusiasm is desirable, and wider representation of Worcestershire at Open tournaments would be a progressive step.

The re-naming of the three divisions of the County League with logical titles—Open, Mixed and Junior Divisions—was another A.G.M. step. At this half-way point of the season, some interesting finishes in March and April seem to be in prospect.

COUNTY LEAGUE

For the first time in several seasons, Bromsgrove are not leading the Open Division; they have lost 4-6 to both Malvern and Redditch and must now rely on these two sides slipping up.

Malvern's success this year is due to the arrival of Nick Bottomley but they could find the Redditch quartet of Hammond, Brown, Ron Judd and Murray too strong at the bottom of the order.

Bromsgrove had John Heathcote making his first appearance at Redditch but the home side scraped home 6-4 thanks to unbeaten performances by Bob Brown and Judd with Colin Hammond getting the vital sixth set by beating the new County No. 1 Brian Belcher.

In the Mixed Division, it is the usual picture with Worcester and Hereford at the top, but Halesowen with Linda Reid could pose a threat. In the Junior Division—only 4 entries this season—the Worcester League who can field the top two county boys and girls should win easily.

STAFFORDSHIRE NOTES

by John Pike

WITH the County "B" team and the juniors both winning their December matches, it looks like Staffordshire might enjoy more success in the second half of the season, than they did in the first.

The Woodfield tournament at Wolverhampton was again very successful with most of the trophies slipping away to Birmingham. Richard Cooper in particular had a day to remember by winning the mixed with Janet Rowley, the men's doubles with Bob Brown, and then beating Bob in the final of the men's singles to complete a very good hat-trick.

Joyce Lloyd—it seems a long time ago she first played in the Woodfield—won the women's singles as well as the doubles with J. Hunt.

As in previous years, all proceeds from this tournament went to the Wolverhampton Spastics Society. At the time of writing, the final amount was not known, but Woodfield officials were optimistic that the figure would pass last year's. Following their wins over Northampton and Nuneaton, West Bromwich now face Birmingham in the zone final of the Rose Bowl. Good luck Kath Farry, Rita Beebee, and Anne Baker for this one.

Jim Hayward, who has done so much to make the Highfields School Centre the success it is, has just completed 20 years as a coach, and from all of us in the county we say "Congratulations Jim".

FLAG-WAGGER IN TORINO

Alan Porter, Hon. Treasurer of the Bolton S.S.S. League and Lancashire's one and only National Umpire, was one of three English officials appointed by the Football Association to take charge of the European Fairs Cup match between Juventus (Italy) and Pecs Dozsa (Hungary) on Dec. 16.

Alan, who is also Lancashire County Umpires' Secretary, returned home from Turin with nothing but praise for the fabulous hospitality provided by the host club who won 2-0 in the closing minutes of an uninspired match.

Bob Ractliffe, the St. Albans League, Herts. County and England Junior player of the early 60s, joined the Westinghouse Electric Corporation at Pittsburgh, Pennsylvania some 5½ years ago after obtaining an Honours Degree in Electrical Engineering at King's College, University of London. Whilst at King's, he was captain of both the College and University Table Tennis clubs.

Since being in Pittsburgh, he has obtained by evening studies, a Master's degree in Electrical Engineering at the University of Pittsburgh and is currently studying for a Master's degree in Business Administration.

Works' Sports Clubs and Social Clubs which are a prominent feature in the U.K. do not exist in a similar way in Pittsburgh, the emphasis being on spectator sports such as American football, Baseball, Ice Hockey etc. However, the University of Pittsburgh recently staged the first of what is to become an annual Open Table Tennis Tournament. Bob decided to enter just for fun and dug out his old bat which he had taken to the States nearly 6 years previously. This was a tacky mess and unusable. The only bats which could be purchased were "sandwich" type of which he had had no previous experience and time was very short. He succeeded in borrowing a pimped rubber bat and played in all 10 best of 5 rubber matches to win the tournament. In the second round, he defeated the No. 1 seed. The preparation on the morning of the tournament was rather unusual—being a 3 hour degree examination! The following extract is taken from the official report:—

ENGLISH TABLE TENNIS STAR WINS PITT COLLEGIATE

Pitt's first annual Open Table Tennis Tournament attracted many area and foreign stars last Saturday.

Robert Ractliffe, an Englishman studying here in the Graduate School of Business and a past member of England's Junior Table Tennis team, captured the Collegiate Open, defeating in the Final Robert Ball, 21-13; 21-16; 21-15.

Mr. Ractliffe is a graduate of King's College, University of London, and of the University of Pittsburgh with a B.Sc., from the former and an M.S. from the latter.

County Diary

Fixtures and Venues for January/early February, 1971

- 2nd Midland**
Jan. 16—Bedfordshire v. Worcestershire, Pioneers Boys' Club, Dunstable, 7-00 p.m.
- Jan. 30—Nottinghamshire v. Warwickshire II, Nottingham T.T.L. Headquarters, Beech Avenue, New Basford, Nottingham, 7-30 p.m.
- Junior Premier**
Feb. 5—Middlesex v. Essex, Southall G-T School, Boyd Avenue, Southall, 7-00 p.m.

DERBYSHIRE NOTES

by Walter Reeves

ONE ON A PLATE FOR DERBY

CHESTERFIELD I and Derby I are emerging from the ranks of the County First Division more especially now that Alfreton did not play their leading players against Derby who won 10-0.

Alfreton's regular side of S. Morris, M. Allsop and T. Manning are capable of holding the best in the County but, strangely, against Derby not one of the regulars turned out to hand Derby an easy win.

Activity in the First Division is slow with only five matches to play now that Matlock have withdrawn.

Derby II are setting the pace in Div. 2 with another win, by 10-0, this time at the expense of Matlock II. In close attendance are Alfreton II for who Roger Radford and Ernie Lough were 100% against Matlock III.

Derby's junior Ivor Warner confirmed his No. 1 ranking being unbeaten against Alfreton and Burton juniors.

In the Coca-Cola National Team Competition (Wilmott Cup) only Chesterfield remain with a convincing win over Spalding. Derby went out 4-5 to Nottingham after a very hard fought struggle.

Derby juniors went down to Leicester in the Carter Cup but were far from disgraced in losing 4-5 setting a pattern for future aspirants to live up to.

Active on the veteran front in open tournaments is Derbyshire's Derek Marples. Derek lost in the third to Terry Donlon of Stockport in the semi-final of the Humberside Open. Hope that first veterans' title does not elude you long Derek.

DIVISIONAL TABLES TO 31st DECEMBER 1970

	P	W	D	L	F	A	Pts.
Premier							
Essex	5	5	—	0	37	8	10
Yorkshire	5	4	—	1	29	16	8
Sussex	5	4	—	1	25	20	8
Middlesex	5	3	—	2	26	19	6
Surrey	5	2	—	3	18	27	4
Warwickshire	5	1	—	4	19	26	2
Kent	5	1	—	4	15	30	2
Bucks.	5	0	—	5	11	34	0
2nd South							
Middlesex II	3	3	0	0	26	4	6
Essex II	3	3	0	0	25	5	6
Kent II	3	2	0	1	19	11	4
Surrey II	4	2	0	2	19	21	4
Hampshire	4	1	1	2	17	23	3
Hertfordshire	3	0	1	2	8	22	1
Bucks. II	4	0	0	4	6	34	0
2nd North							
Lancashire	3	3	0	0	23	7	6
Cheshire	3	3	0	0	22	8	6
Yorkshire II	3	3	0	0	18	12	6
North'berland	4	2	0	2	23	17	4
Derbyshire	3	1	0	2	12	18	2
Lincolnshire	4	0	0	4	13	27	0
Durham	4	0	0	4	9	31	0
2nd Midland							
Nottingham.	4	3	1	0	27	13	7
Warwks. II	3	3	0	0	20	10	6
Leicestershire	4	1	2	1	20	20	4
Gloucsters.	4	1	1	2	19	21	3
Staffordshire	3	0	2	1	12	18	2
Worcesters.	3	0	1	2	11	19	1
Berfordshire	3	0	1	2	11	19	1

	P	W	D	L	F	A	Pts.
2nd West							
Glamorgan	4	4	0	0	32	8	8
Somerset	3	2	1	0	18	12	5
Devon	3	2	0	1	19	11	4
Wiltshire	4	1	1	2	18	22	3
Dorset	3	1	0	2	14	16	2
Cornwall	4	1	0	3	12	28	2
Monmouths.	3	0	0	3	7	23	0
Southern							
Sussex II	3	3	0	0	24	6	6
Hampshire II	3	2	0	1	13	17	4
Berkshire	3	1	0	2	15	15	2
Oxfordshire	3	0	0	3	8	22	0
Eastern							
Herts. II	3	2	1	0	19	11	5
Norfolk	3	2	1	0	18	12	5
Cambridges.	3	1	1	1	16	14	3
Northampton.	3	1	0	2	13	17	2
Huntingdons.	3	0	2	1	13	17	2
Suffolk	3	0	1	2	11	19	1
Northern							
Notts. II	1	1	0	0	6	4	2
Nrthm'nd. II	2	1	0	1	11	9	2
Derbys. II	1	0	0	1	3	7	0
Midland							
Glamorgan II	2	2	0	0	18	2	4
Worcs. II	3	1	1	1	17	13	3
Staffs. II	2	1	0	1	9	11	2
Shropshire	3	1	0	2	10	20	2
Denbighs.	2	0	1	1	6	14	1
Junior Premier							
Lancashire	4	3	1	0	25	15	7
Middlesex	3	3	0	0	24	6	6
Kent	4	2	1	1	26	14	5
Essex	3	1	2	0	20	10	4
Yorkshire	3	2	0	1	20	10	4
Warwicks.	3	1	0	2	12	18	2
Hertfords.	4	0	0	4	14	26	0
Glamorgan	4	0	0	4	2	38	0
Junior South							
Surrey	4	4	0	0	33	7	8
Sussex	4	3	0	1	25	15	6
Hampshire	4	2	0	2	23	17	4
Berkshire	4	1	0	3	13	27	2
Buckingham.	4	0	0	4	6	34	0
Junior North							
Cheshire	3	3	0	0	27	3	6
Durham	2	1	0	1	11	9	2
Lincolnshire	2	1	0	1	8	12	2
Derbyshire	2	0	1	1	6	14	1
North'brnd.	3	0	1	2	8	22	1
Junior Midland							
Warwks. II	3	2	1	0	20	10	5
Staffordshire	2	2	0	0	14	6	4
Bedfordshire	2	1	1	0	12	8	3
Leicesters.	4	0	3	1	19	21	3
Nottingham.	3	0	1	2	11	19	1
Nrthampton.	2	0	0	2	4	16	0
Junior East							
Essex II	4	3	1	0	31	9	7
Suffolk	3	3	0	0	19	11	6
Cambs.	3	1	1	1	14	16	3
Norfolk	3	1	0	2	14	16	2
Huntingdons.	3	1	0	2	11	19	2
Herts. II.	4	0	0	4	11	29	0
Junior West							
Devon	3	3	0	0	18	12	6
Wiltshire	3	2	0	1	16	14	4
Gloucs.	3	1	1	1	16	14	3
Somerset	3	1	1	1	15	15	3
Worcs.	3	1	0	2	17	13	2
Monmouths.	3	0	0	3	8	22	0
Veteran South							
Oxfordshire	2	2	0	0	13	5	4
Essex	2	1	—	1	12	6	2
Hertfordshire	2	1	—	1	8	10	2
Hampshire	2	0	—	2	3	15	0
Veteran Midland							
Cheshire	2	2	—	0	14	4	4
Nottingham.	2	2	—	0	11	7	4
Leicestershire	2	0	—	2	7	11	0
Staffordshire	2	0	—	2	4	14	0

Continued from page 24

Glamorgan 0 - Yorkshire 10
Junior South
Berkshire 1 - Sussex 9
Surrey 6 - Hampshire 4
 Surrey all-round strength told in the end in toughest match yet. Two good wins for Paul Bishop; recovered 16-19 to beat Colin Sargeant 21, 9; slumped from 19-11 to beat Phil Crane 24, 9. Leslie Parodi cool in vital set; Gillian Macrae still improving.

Junior North
Cheshire 8 - Durham 2
Junior Midland
Nottingham. 4 - Warwicks. II 6
 With the match score 3-all, the clash for the No. 1's produced the best set of a good match. The thinnest of edges at 20-19 in third gave S. Taylor victory over Notts Roger Dawkins. Just before this Jane Burbage had notched the home team's first GS win in two years.

Bedfordshire 7 - Northampton. 3
 Against known opponents, Beds were surprised to take all BS and BD. The Northants girls restored the balance.

Staffordshire 6 - Leicestershire 4
 Leics. girls retained their enviable record of wins, but the home boys too good. With the match score at 5-4 Stephen Dunning had a cliff-hanger v. Chris Rogers. 10.7 became 10-all, all seemed over at 19-16, but then Dunning trailed 19-20. A rash forehand-down-the-line from Rogers was well off and Dunning made no mistakes to win 16, -14, 20. Keith Fellows had fine match, not dropping a game.

Junior East
Cambridgeshire 5 - Essex II 5
 Cambs. first ever point from Essex and they might have had two as they led 4-1 and 5-4. But John Andrews saved the match with 17, -15, 19 win over John Willis (who earlier beat Stephen Kitteridge 20, -17, 19). Paul Day still unbeaten, but taken very close by Martin Bowden.

Huntingdonshire 6 - Hertfords. II 4
Norfolk 3 - Suffolk 7
Hertfordshire II 1 - Essex II 9
 Far closer than the score suggests, Essex taking 4 of the 5 3-game sets. Karen Morton unlucky to fall 17, -20, -21 to Gillian Taylor.

Junior West
Gloucestershire 4 - Wiltshire 6
 The home boys let slip a 4-2 lead over more experienced opponents. Gillian Wetmore retained 100% record.

Devon 6 - Monmouthshire 4
Worcestershire 4 - Somerset 6
 Only Trevor Gatfield, after a hesitant start, gave any support to unbeaten Ian Schofield. Richard Warby surrendered long third game lead over R. Andrews with lack of concentration and the Somerset girls, as expected, were too powerful.

Veteran South
Hampshire 0 - Essex 9
 Essex just that bit stronger all through.

Oxfordshire 7 - Hertfordshire 2

County Championships Round-up

by JOHN WRIGHT

ALTHOUGH the Premier Division is nearing completion, many of the other divisions are at the half-way stage, and despite a heavy programme of matches a couple of days before these words appear in print it may be useful to look at present positions.

Only a major upset can stop Essex regaining the Premier title, and Sussex could improve on their previous highest placing (3rd in 68-69). But none of Surrey, Warwicks, Kent are yet safe whilst Bucks seem certain to drop.

Should either Kent or Surrey face relegation they could be saved by their second teams: if both escape the promotion candidates from 2nd South are likely to be Hampshire who may finish 5th! 2nd North sees Northumberland out of the race with Lancashire or Cheshire (who meet on January 9th) going through.

Notts are having a great season in 2nd Midland and fancy their chances: the meeting with Warwicks II (who may need to save their own first team) is critical. Glamorgan have set a hot pace in 2nd West: Devon's January 9th match v. Somerset will reduce their challengers to one.

Sussex II seem assured of 2nd Division play next season, and Glamorgan II could also achieve this status if their 1st team rise.

Any of five Counties could take the new Junior Premier which has produced some good matches. Surrey and Cheshire look likely Regional winners—might we see Devon successful in West at the first attempt.

Lastly the Veterans where Oxfordshire should take a division for only the second time ever, and meet in the play-off either Notts or Cheshire.

In conclusion, a brief comment on Malcolm Scott's amusing letter in last month's issue. As one of the very few people to have any part in the National organisation of the CTC I consider I have every right to air any views I hold.

Premier Division

Essex 6 - Sussex 3

C. Barnes bt R. Chandler 19, 16; bt P. Williams 12, 17.
T. Taylor lost to Chandler 17, -17, -11; bt S. Ogundipe 15, 14.
D. Brown bt Williams 14, 12; bt Ogundipe 16, 12.
Barnes and Taylor bt Chandler and Williams 16, 19.
Mrs. L. Radford lost to Miss J. Williams -12, 7, -14.
P. Radford and Radford lost to Ogundipe and Williams -16, -16.

Surrey 8 - Buckinghamshire 1

R. Penfold bt S. Hahn 14, 12; bt L. Wooding 20, 17.
C. Warren bt Hahn 10, 15; bt A. Watson 15, 25.
B. Hill bt Wooding -20, 24, 18; bt Watson 6, 20.
Penfold and Warren bt Watson and Wooding -13, 19, 16.
Miss S. Howard lost to Miss J. Shirley 13, -10, -15.
Hill and Howard bt Hahn and Shirley -23, 17, 16.

A convincing win for Surrey in high entertainment match due to contrast in players' styles. Best set the XD with some grand quality play and WS also good with Susan Howard extending Jill Shirley.

Warwickshire 4 - Middlesex 5

B. Burn bt O. Haslam 21, 17; lost to M. Sugden -5, -16.
D. Munt lost to Haslam 17, -17, -13; bt B. Petch 14, 14.
R. Cooper lost to Sugden -18, -12; bt Petch 17, -15, 14.
Burn and Gunnion bt Haslam and Petch -14, 9, 19.
Mrs. H. Hamilton lost to Miss M. Walker 19, -20, -20.
Gunnion and Hamilton lost to Sugden and Walker -16, -19.

Yorkshire 6 - Kent 3

A. Hydes bt A. Piddock -20, 13, 19; bt H. Buist -20, 17, 10.
N. Jarvis bt Piddock 14, 15; bt J. Dabin 9, 14.
J. Kedge bt Buist 19, 19; lost to Dabin -13, -11.
Hydes and Jarvis bt Buist and Piddock 14, 11.
Miss L. Bashford lost to Mrs. P. Piddock -12, -8.
Kedge and Bashford lost to Dabin and Piddock -10, -16.

Convincing win by Yorks, set up by Nicky Jarvis with fine win over Tony Piddock in first set. Shaky start by John Kedge, but he improved to clinch the match by beating Henry Buist, but Linda Bashford quite out of touch.

Buckinghamshire 4 - Warwickshire 5

P. Shirley lost to B. Burn -10, -17; bt D. Munt -23, 13, 20.
S. Hahn bt Burn 15, -14, 9; lost to R. Gunnion -13, -13.
A. Watson lost to Munt -9, -20; lost to Gunnion -22, -10.
Hahn and Watson lost to Burn and Gunnion -15, -19.
Miss J. Shirley bt Mrs. D. Griffiths 15, 12.
Shirley and Shirley bt Munt and Griffiths 18, 10.

Fine start for Bucks with Stan Hahn beating Brian Burn, then Paul Shirley made it 2-0 beating Derek Munt despite dropping first from 19-14. Ralph Gunnion's first singles and MD to Warwicks, XD and WS to Bucks made it 4-2. Burn untroubled by Paul Shirley: 4-3. A 12 minute first game, then Munt led 19-14 in second v. Alec Watson, then expedite—six points to Watson, followed by three to Munt for 4-all. Gunnion, best player on the day, then wrapped up Warwicks first win.

Kent 0 - Essex 9

A. Piddock lost to C. Barnes -14, -18; lost to T. Taylor -10, -13.
J. Dabin lost to Barnes -13, -22; lost to D. Brown -11, -13.
K. Baker lost to Taylor -17, -16; lost to Brown -17, 16, -13.
Baker and Piddock lost to Barnes and Taylor 18, -8, -11.
Mrs. P. Piddock lost to Mrs. L. Radford -15, 16, -17.
Dabin and Piddock lost to Brown and Radford -19, 16, -17.

Surrey 2 - Yorkshire 7

R. Penfold lost to A. Clayton -8, -17; lost to N. Jarvis -19, -18.
C. Warren lost to Clayton 11, -18, -21; bt A. Fletcher 19, 15.
B. Hill lost to Jarvis -16, -15; lost to Fletcher -16, -16.
Penfold and Warren lost to Clayton and Jarvis 17, -11, -18.
Miss S. Howard bt Miss L. Bashford 18, 18.
Hill and Howard lost to Fletcher and Bashford 11, -18, -11.

Middlesex 4 - Sussex 5

O. Haslam bt R. Chandler 18, -12, 16; lost to F. Williams -9, -10.
M. Sugden bt Chandler -20, 11, 11; bt S. Ogundipe 9, 14.
B. Petch lost to Williams -12, -15; lost to Ogundipe -15, -14.
Haslam and Petch lost to Chandler and Williams -19, -19.
Mrs. K. Mathews lost to Miss J. Williams -18, 14, -14.
Sugden and Mathews bt Ogundipe and Williams 16, 9.

A very slow table, and failure (through late arrival) to practice sufficiently on it beforehand, contributed to Middlesex downfall. Peter and Judy Williams in fine form, also Malcolm Sugden.

2nd South

Buckinghamshire II 2 - Surrey II 8

Middlesex II 9 - Hampshire 1

Kent II 8 - Hertfordshire 2

2nd North

Cheshire 8 - Durham 2

Lincolnshire 4 - Yorkshire II 6

Northumberland 3 - Lancashire 7

M.S. events shared, but Lancs. superior in doubles and women's events. Alan Ransome outstanding but good all-round team work by the visitors ensured their success.

2nd Midland

Gloucestershire 6 - Bedfordshire 4

Another close match with promising debut for John Wise (Gs.). Best set that between Peter Taylor and Roy Morley with the former just getting home 13, -12, 21.

Leicestershire 4 - Warwickshire II 6

The visitors slightly the better side and had in Brian Mitchell by far the best player. Great recovery by Glenys Odams who trailed Andrea Jones by a game and 4-14 but won -15, 20, 16.

Worcestershire 2 - Nottingham. 8

Another good result for (probably) the most improved team in the country whose men unbeaten. Two expedite MS for John Bell: at 1-3 in third v. Alf Saunders to whom he lost -10, 9, -19; at 17-17 in 1st v. Phil Spencer to whom he lost -19, -14. Alan Croome devastating against chop but consolation for Worcs with Linda Reid taking WS and WD with Joyce Lloyd.

2nd West

Cornwall 7 - Monmouthshire 3

First win for Cornwall since Feb. '67—the introduction of Colin Monson (ex Sussex) and return to form of Judy Chinn making the

difference. 4-0 up should have become 5-0, but MD dropped from 17-13 in third with service to come and WS also lost. Key match Bob Parkins v. A. Huish with the former overcoming strong defence and barrage of words to get home -19, 18, 19.

Dorset 3 - Somerset 7

Four sets decided at 19 in third or closer. Penny Perry (Bonner) in first match for Somerset since October '65 made fantastic recovery v. Joyce Coop winning 1st at 16 and trailing 12-20 in second: she eventually won on expedite 29-27. This was the turning point. Both number 1's off colour.

Wiltshire 4 - Devon 6

Seven sets needed the deciding game in very hard-fought match. Bill Moulding, before home town audience, in great form to win 3.

Southern

Hampshire II 6 - Berkshire 4

Eastern

Norfolk 6 - Northamptonshire 4

A real nail-biter, with the deciding match going to Peter Graver v. Peter Root -20, 17, 23. Well staged by Dereham League.

Suffolk 5 - Huntingdonshire 5

Hertfordshire II 6 - Cambridge. 4

Nice debut for Alan Campbell who won three. Unlucky David Seaholme broke his bat in first game of final set and could not quite cope with the borrowed one, going down 17, -12, -11 to Steve Andrews.

Midland

Shropshire 1 - Glamorgan II 9

Staffordshire II 6 - Worcs. II 4.

Northern

Nottinghamshire II 6 - Northumberland II 4

Fine fight by visitors from 0-4 to 4-5, but W. Arkle could not hold his 15-13 lead in third of last set v. John Ellis. Good performance by generally inexperienced home team.

Junior Premier

Essex 5 - Lancashire 5

Essex denied victory by Suzanne Manning's shock defeat of Susan Beckwith 17, 17. Other sets went by form book except for Tony Boasman's victory over Ian Horsham -19, 15, 13 in magnificent set. Fine spirit—great match.

Kent 2 - Middlesex 8

Before this match Kent wondering how many division-winners awards to order, but only Paul Guttormsen played to form. Andy Mitchell not the same player who played v. Essex, Stephen Endersby wasted leads with mad hitting. Lynda Chesson apparently gave up (match score then 1-4) v. Sheila Hamilton and lost -10, -14. Middlesex players kept their heads and ran out easy winners. This match ammunition for those who feel too much emphasis on Junior play.

Hertfordshire 4 - Lancashire 6

With Boasman rushed up to New-castle for the Senior match, Lancs weakened. Donald Parker rose to the occasion to beat Michael Harper -9, 20, 18 after trailing 10-15 in 2nd, 15-18 in 3rd. Vital set won by P. Riley, on debut, -15, 20, 18 over R. Morris.

Warwickshire 3 - Yorkshire 7

Continued on page 23